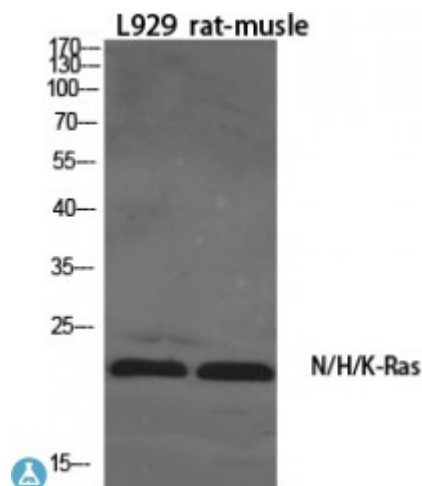


Anti-N/H/K-Ras antibody



Description	Rabbit polyclonal to N/H/K-Ras.
Model	STJ94325
Host	Rabbit
Reactivity	Human, Mouse, Rat
Applications	ELISA, IHC, WB
Immunogen	Synthesized peptide derived from human N/H/K-Ras
Immunogen Region	10-90 aa, N-terminal
Gene ID	4893
Gene Symbol	NRAS
Dilution range	WB 1:500-1:2000IHC 1:100-1:300ELISA 1:20000
Specificity	N/H/K-Ras Polyclonal Antibody detects endogenous levels of N/H/K-Ras protein.
Purification	The antibody was affinity-purified from rabbit antiserum by affinity-chromatography using epitope-specific immunogen.
Note	For Research Use Only (RUO).
Protein Name	GTPase NRas Transforming protein N-Ras
Molecular Weight	21 kDa
Clonality	Polyclonal
Conjugation	Unconjugated

Isotype	IgG
Formulation	Liquid in PBS containing 50% glycerol, 0.5% BSA and 0.02% sodium azide.
Concentration	1 mg/ml
Storage Instruction	Store at -20°C, and avoid repeat freeze-thaw cycles.
Database Links	HGNC:79890MIM:137550
Alternative Names	GTPase NRas Transforming protein N-Ras
Function	Ras proteins bind GDP/GTP and possess intrinsic GTPase activity.
Cellular Localization	Cell membrane Golgi apparatus membrane. Shuttles between the plasma membrane and the Golgi apparatus.
Post-translational Modifications	Palmitoylated by the ZDHHC9-GOLGA7 complex. A continuous cycle of de- and re-palmitoylation regulates rapid exchange between plasma membrane and Golgi. Acetylation at Lys-104 prevents interaction with guanine nucleotide exchange factors (GEFs).

St John's Laboratory Ltd

F +44 (0)207 681 2580

T +44 (0)208 223 3081

W <http://www.stjohnslabs.com/>

E info@stjohnslabs.com