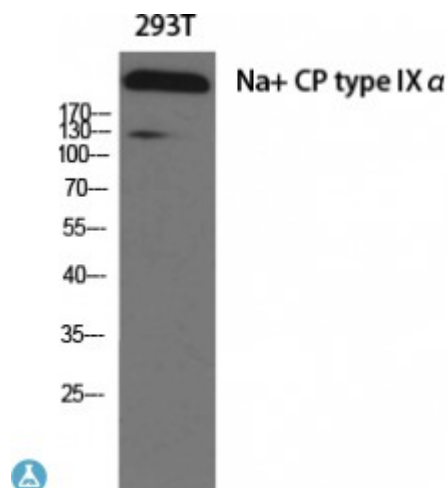


## Anti-Na<sup>+</sup> CP type I alpha antibody



<b>Description</b>	Rabbit polyclonal to Na <sup>+</sup> CP type IXalpha.
<b>Model</b>	STJ94332
<b>Host</b>	Rabbit
<b>Reactivity</b>	Human, Mouse, Rat
<b>Applications</b>	ELISA, IHC, WB
<b>Immunogen</b>	Synthesized peptide derived from human Na <sup>+</sup> CP type IXalpha
<b>Immunogen Region</b>	620-700 aa, Internal
<b>Gene ID</b>	<a href="#">6335</a>
<b>Gene Symbol</b>	<a href="#">SCN9A</a>
<b>Dilution range</b>	WB 1:500-1:2000IHC 1:100-1:300ELISA 1:40000
<b>Specificity</b>	Na <sup>+</sup> CP type IXalpha Polyclonal Antibody detects endogenous levels of Na <sup>+</sup> CP type IXalpha protein.
<b>Tissue Specificity</b>	Expressed strongly in dorsal root ganglion, with only minor levels elsewhere in the body, smooth muscle cells, MTC cell line and C-cell carcinoma. Isoform 1 is expressed preferentially in the central and peripheral nervous system. Isoform 2 is expressed preferentially in the dorsal root ganglion.
<b>Purification</b>	The antibody was affinity-purified from rabbit antiserum by affinity-chromatography using epitope-specific immunogen.
<b>Note</b>	For Research Use Only (RUO).
<b>Protein Name</b>	Sodium channel protein type 9 subunit alpha Neuroendocrine sodium channel hNE-Na Peripheral sodium channel 1 PN1 Sodium channel protein type IX

	subunit alpha Voltage-gated sodium channel subunit alpha Nav1.7
<b>Molecular Weight</b>	220 kDa
<b>Clonality</b>	Polyclonal
<b>Conjugation</b>	Unconjugated
<b>Isotype</b>	IgG
<b>Formulation</b>	Liquid in PBS containing 50% glycerol, 0.5% BSA and 0.02% sodium azide.
<b>Concentration</b>	1 mg/ml
<b>Storage Instruction</b>	Store at -20°C, and avoid repeat freeze-thaw cycles.
<b>Database Links</b>	<a href="https://www.ncbi.nlm.nih.gov/condensedcode/HGNC:10597OMIM:133020">HGNC:10597OMIM:133020</a>
<b>Alternative Names</b>	Sodium channel protein type 9 subunit alpha Neuroendocrine sodium channel hNE-Na Peripheral sodium channel 1 PN1 Sodium channel protein type IX subunit alpha Voltage-gated sodium channel subunit alpha Nav1.7
<b>Function</b>	Mediates the voltage-dependent sodium ion permeability of excitable membranes. Assuming opened or closed conformations in response to the voltage difference across the membrane, the protein forms a sodium-selective channel through which Na(+) ions may pass in accordance with their electrochemical gradient . It is a tetrodotoxin-sensitive Na(+) channel isoform . Plays a role in pain mechanisms, especially in the development of inflammatory pain .
<b>Sequence and Domain Family</b>	The sequence contains 4 internal repeats, each with 5 hydrophobic segments (S1, S2, S3, S5, S6) and one positively charged segment (S4). Segments S4 are probably the voltage-sensors and are characterized by a series of positively charged amino acids at every third position.
<b>Cellular Localization</b>	Cell membrane Cell projection. In neurite terminals.
<b>Post-translational Modifications</b>	Phosphorylation at Ser-1490 by PKC in a highly conserved cytoplasmic loop increases peak sodium currents. Ubiquitinated by NEDD4L; which may promote its endocytosis. Does not seem to be ubiquitinated by NEDD4.