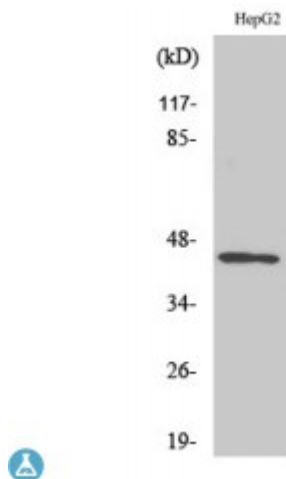


Anti-Nap1 antibody



Description	Rabbit polyclonal to Nap1.
Model	STJ94343
Host	Rabbit
Reactivity	Human, Mouse, Rat
Applications	ELISA, IF, IHC, WB
Immunogen	Synthesized peptide derived from human Nap1
Immunogen Region	10-90 aa, N-terminal
Gene ID	64343
Gene Symbol	AZI2
Dilution range	WB 1:500-1:2000IHC 1:100-1:300IF 1:200-1:1000ELISA 1:20000
Specificity	Nap1 Polyclonal Antibody detects endogenous levels of Nap1 protein.
Tissue Specificity	Widely expressed. Abundant expression seen in the pancreas and testis.
Purification	The antibody was affinity-purified from rabbit antiserum by affinity-chromatography using epitope-specific immunogen.
Note	For Research Use Only (RUO).
Protein Name	5-azacytidine-induced protein 2 NF-kappa-B-activating kinase-associated protein 1 Nak-associated protein 1 TILP
Molecular Weight	48 kDa
Clonality	Polyclonal

Conjugation	Unconjugated
Isotype	IgG
Formulation	Liquid in PBS containing 50% glycerol, 0.5% BSA and 0.02% sodium azide.
Concentration	1 mg/ml
Storage Instruction	Store at -20°C, and avoid repeat freeze-thaw cycles.
Database Links	HGNC:24002OMIM:609916
Alternative Names	5-azacytidine-induced protein 2 NF-kappa-B-activating kinase-associated protein 1 Nak-associated protein 1 TILP
Function	Adapter protein which binds TBK1 and IKBKE playing a role in antiviral innate immunity. Activates serine/threonine-protein kinase TBK1 and facilitates its oligomerization. Enhances the phosphorylation of NF-kappa-B p65 subunit RELA by TBK1. Promotes TBK1-induced as well as TNF-alpha or PMA-induced activation of NF-kappa-B. Participates in IFNB promoter activation via TICAM1.
Cellular Localization	Cytoplasm

St John's Laboratory Ltd

F +44 (0)207 681 2580

T +44 (0)208 223 3081

W <http://www.stjohnslabs.com/>

E info@stjohnslabs.com