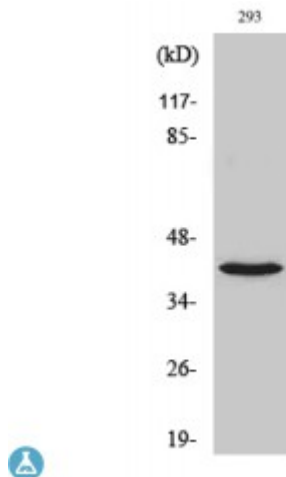


Anti-NBPF1/9/10/12/14/15/16/20 antibody



Description	Rabbit polyclonal to NBPF1/9/10/12/14/15/16/20.
Model	STJ94349
Host	Rabbit
Reactivity	Human
Applications	ELISA, IHC, WB
Immunogen	Synthesized peptide derived from human NBPF1/9/10/12/14/15/16/20
Immunogen Region	700-780 aa, C-terminal
Gene Symbol	NBPF12
Dilution range	WB 1:500-1:2000IHC 1:100-1:300ELISA 1:40000
Specificity	NBPF1/9/10/12/14/15/16/20 Polyclonal Antibody detects endogenous levels of NBPF1/9/10/12/14/15/16/20 protein.
Purification	The antibody was affinity-purified from rabbit antiserum by affinity-chromatography using epitope-specific immunogen.
Note	For Research Use Only (RUO).
Protein Name	Neuroblastoma breakpoint family member 12 Chromosome 1 amplified sequence 1
Molecular Weight	36 kDa
Clonality	Polyclonal
Conjugation	Unconjugated
Isotype	IgG

Formulation	Liquid in PBS containing 50% glycerol, 0.5% BSA and 0.02% sodium azide.
Concentration	1 mg/ml
Storage Instruction	Store at -20°C, and avoid repeat freeze-thaw cycles.
Database Links	HGNC:24297OMIM:608607
Alternative Names	Neuroblastoma breakpoint family member 12 Chromosome 1 amplified sequence 1

St John's Laboratory Ltd

F +44 (0)207 681 2580

T +44 (0)208 223 3081

W <http://www.stjohnslabs.com/>

E info@stjohnslabs.com