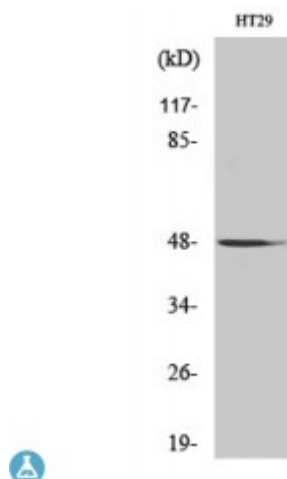


Anti-NBPF7 antibody



Description	Rabbit polyclonal to NBPF7.
Model	STJ94352
Host	Rabbit
Reactivity	Human
Applications	ELISA, WB
Immunogen	Synthesized peptide derived from human NBPF7
Immunogen Region	330-410 aa, C-terminal
Gene ID	343505
Gene Symbol	NBPF7
Dilution range	WB 1:500-1:2000ELISA 1:40000
Specificity	NBPF7 Polyclonal Antibody detects endogenous levels of NBPF7 protein.
Purification	The antibody was affinity-purified from rabbit antiserum by affinity-chromatography using epitope-specific immunogen.
Note	For Research Use Only (RUO).
Protein Name	Putative neuroblastoma breakpoint family member 7
Molecular Weight	48 kDa
Clonality	Polyclonal
Conjugation	Unconjugated
Isotype	IgG

Formulation	Liquid in PBS containing 50% glycerol, 0.5% BSA and 0.02% sodium azide.
Concentration	1 mg/ml
Storage Instruction	Store at -20°C, and avoid repeat freeze-thaw cycles.
Database Links	HGNC:31989OMIM:613997
Alternative Names	Putative neuroblastoma breakpoint family member 7

St John's Laboratory Ltd

F +44 (0)207 681 2580

T +44 (0)208 223 3081

W <http://www.stjohnslabs.com/>

E info@stjohnslabs.com