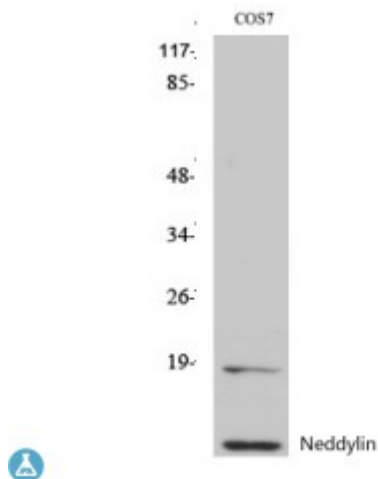


## Anti-Neddylin antibody



<b>Description</b>	Rabbit polyclonal to Neddylin.
<b>Model</b>	STJ94391
<b>Host</b>	Rabbit
<b>Reactivity</b>	Human, Mouse, Rat, Simian
<b>Applications</b>	ELISA, IHC, WB
<b>Immunogen</b>	Synthesized peptide derived from human Neddylin
<b>Immunogen Region</b>	10-90 aa, N-terminal
<b>Gene ID</b>	<a href="#">4738</a>
<b>Gene Symbol</b>	<a href="#">NEDD8</a>
<b>Dilution range</b>	WB 1:500-1:2000IHC 1:100-1:300ELISA 1:5000
<b>Specificity</b>	Neddylin Polyclonal Antibody detects endogenous levels of Neddylin protein.
<b>Tissue Specificity</b>	Highly expressed in heart, skeletal muscle, spleen, thymus, prostate, testis, ovary, colon and leukocytes.
<b>Purification</b>	The antibody was affinity-purified from rabbit antiserum by affinity-chromatography using epitope-specific immunogen.
<b>Note</b>	For Research Use Only (RUO).
<b>Protein Name</b>	NEDD8 Neddylin Neural precursor cell expressed developmentally down-regulated protein 8 NEDD-8 Ubiquitin-like protein Nedd8
<b>Molecular Weight</b>	85 kDa
<b>Clonality</b>	Polyclonal

<b>Conjugation</b>	Unconjugated
<b>Isotype</b>	IgG
<b>Formulation</b>	Liquid in PBS containing 50% glycerol, 0.5% BSA and 0.02% sodium azide.
<b>Concentration</b>	1 mg/ml
<b>Storage Instruction</b>	Store at -20°C, and avoid repeat freeze-thaw cycles.
<b>Database Links</b>	<a href="https://www.ncbi.nlm.nih.gov/condensedcode/77320MIM:603171">HGNC:77320MIM:603171</a>
<b>Alternative Names</b>	NEDD8 Neddylin Neural precursor cell expressed developmentally down-regulated protein 8 NEDD-8 Ubiquitin-like protein Nedd8
<b>Function</b>	Ubiquitin-like protein which plays an important role in cell cycle control and embryogenesis. Covalent attachment to its substrates requires prior activation by the E1 complex UBE1C-APPBP1 and linkage to the E2 enzyme UBE2M. Attachment of NEDD8 to cullins activates their associated E3 ubiquitin ligase activity, and thus promotes polyubiquitination and proteasomal degradation of cyclins and other regulatory proteins.
<b>Cellular Localization</b>	Nucleus. Mainly nuclear.
<b>Post-translational Modifications</b>	Cleavage of precursor form by UCHL3 or SENP8 is necessary for function.

---

**St John's Laboratory Ltd**

**F** +44 (0)207 681 2580

**T** +44 (0)208 223 3081

**W** <http://www.stjohnslabs.com/>

**E** [info@stjohnslabs.com](mailto:info@stjohnslabs.com)