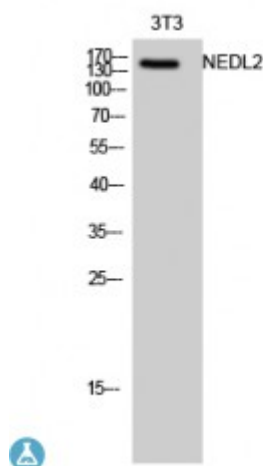


Anti-NEDL2 antibody (Internal)



Description	Rabbit polyclonal to NEDL2 (Internal).
Model	STJ94392
Host	Rabbit
Reactivity	Human
Applications	ELISA, WB
Immunogen	Synthesized peptide derived from human NEDL2
Immunogen Region	450-530 aa, Internal
Gene ID	57520
Gene Symbol	HECW2
Dilution range	WB 1:500-1:2000ELISA 1:10000
Specificity	NEDL2 Polyclonal Antibody detects endogenous levels of NEDL2 protein.
Tissue Specificity	Predominantly expressed in adult brain, lung and heart.
Purification	The antibody was affinity-purified from rabbit antiserum by affinity-chromatography using epitope-specific immunogen.
Note	For Research Use Only (RUO).
Protein Name	E3 ubiquitin-protein ligase HECW2 HECT, C2 and WW domain-containing protein 2 HECT-type E3 ubiquitin transferase HECW2 NEDD4-like E3 ubiquitin-protein ligase 2
Molecular Weight	150 kDa
Clonality	Polyclonal

Conjugation	Unconjugated
Isotype	IgG
Formulation	Liquid in PBS containing 50% glycerol, 0.5% BSA and 0.02% sodium azide.
Concentration	1 mg/ml
Storage Instruction	Store at -20°C, and avoid repeat freeze-thaw cycles.
Database Links	HGNC:29853OMIM:617245
Alternative Names	E3 ubiquitin-protein ligase HECW2 HECT, C2 and WW domain-containing protein 2 HECT-type E3 ubiquitin transferase HECW2 NEDD4-like E3 ubiquitin-protein ligase 2
Function	E3 ubiquitin-protein ligase that mediates ubiquitination of TP73. Acts to stabilize TP73 and enhance activation of transcription by TP73 . Involved in the regulation of mitotic metaphase/anaphase transition .
Cellular Localization	Cytoplasm Cytoplasm, cytoskeleton, spindle
Post-translational Modifications	Ubiquitinated and degraded during mitotic exit by APC/C-Cdh1.

St John's Laboratory Ltd

F +44 (0)207 681 2580
T +44 (0)208 223 3081

W <http://www.stjohnslabs.com/>
E info@stjohnslabs.com