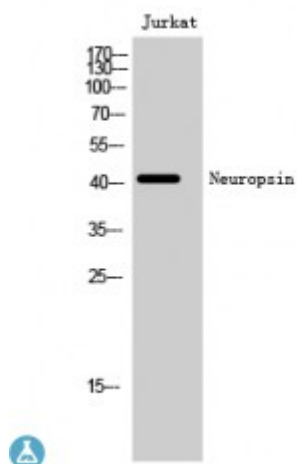


Anti-Neuropsin antibody



Description	Rabbit polyclonal to Neuropsin.
Model	STJ94441
Host	Rabbit
Reactivity	Human, Mouse
Applications	ELISA, IF, WB
Immunogen	Synthesized peptide derived from human Neuropsin
Immunogen Region	220-300 aa, C-terminal
Gene ID	221391
Gene Symbol	OPN5
Dilution range	WB 1:500-1:2000IF 1:200-1:1000ELISA 1:5000
Specificity	Neuropsin Polyclonal Antibody detects endogenous levels of Neuropsin protein.
Tissue Specificity	Detected in brain and retina and cell lines derived from neural retina.
Purification	The antibody was affinity-purified from rabbit antiserum by affinity-chromatography using epitope-specific immunogen.
Note	For Research Use Only (RUO).
Protein Name	Opsin-5 G-protein coupled receptor 136 G-protein coupled receptor PGR12 Neuropsin Transmembrane protein 13
Molecular Weight	43 kDa
Clonality	Polyclonal

Conjugation	Unconjugated
Isotype	IgG
Formulation	Liquid in PBS containing 50% glycerol, 0.5% BSA and 0.02% sodium azide.
Concentration	1 mg/ml
Storage Instruction	Store at -20°C, and avoid repeat freeze-thaw cycles.
Database Links	HGNC:19992OMIM:609042
Alternative Names	Opsin-5 G-protein coupled receptor 136 G-protein coupled receptor PGR12 Neurosin Transmembrane protein 13
Cellular Localization	Membrane. Multi-pass membrane protein.
Post-translational Modifications	It is uncertain whether Cys-315 or Cys-316 is palmitoylated.

St John's Laboratory Ltd

F +44 (0)207 681 2580

T +44 (0)208 223 3081

W <http://www.stjohnslabs.com/>

E info@stjohnslabs.com