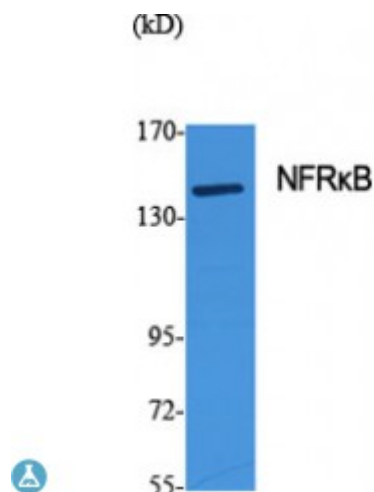


Anti-NF kappa antibody



Description	Rabbit polyclonal to NFRkappaB.
Model	STJ94454
Host	Rabbit
Reactivity	Human, Mouse, Simian
Applications	ELISA, WB
Immunogen	Synthesized peptide derived from human NFRkappaB
Immunogen Region	440-520 aa, Internal
Gene ID	4798
Gene Symbol	NFRKB
Dilution range	WB 1:500-1:2000ELISA 1:40000
Specificity	NFRkappaB Polyclonal Antibody detects endogenous levels of NFRkappaB protein.
Tissue Specificity	Expressed in thymus, brain, testes, spleen and liver.
Purification	The antibody was affinity-purified from rabbit antiserum by affinity-chromatography using epitope-specific immunogen.
Note	For Research Use Only (RUO).
Protein Name	Nuclear factor related to kappa-B-binding protein DNA-binding protein R kappa-B INO80 complex subunit G
Molecular Weight	140 kDa
Clonality	Polyclonal

Conjugation	Unconjugated
Isotype	IgG
Formulation	Liquid in PBS containing 50% glycerol, 0.5% BSA and 0.02% sodium azide.
Concentration	1 mg/ml
Storage Instruction	Store at -20°C, and avoid repeat freeze-thaw cycles.
Database Links	HGNC:7802OMIM:164013
Alternative Names	Nuclear factor related to kappa-B-binding protein DNA-binding protein R kappa-B INO80 complex subunit G
Function	Binds to the DNA consensus sequence 5'-GGGGAATCTCC-3'. Putative regulatory component of the chromatin remodeling INO80 complex which is involved in transcriptional regulation, DNA replication and probably DNA repair. Modulates the deubiquitinase activity of UCHL5 in the INO80 complex.
Sequence and Domain Family	NFRKB seems to be mostly disordered. The wing-helix like domain doesn't bind DNA.
Cellular Localization	Nucleus