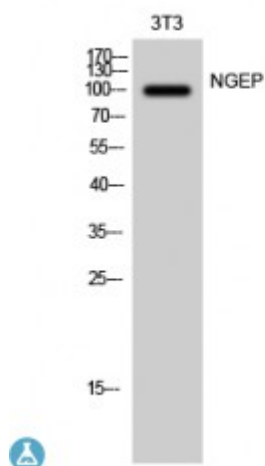


## Anti-NGEP antibody



<b>Description</b>	Rabbit polyclonal to NGEP.
<b>Model</b>	STJ94478
<b>Host</b>	Rabbit
<b>Reactivity</b>	Human
<b>Applications</b>	ELISA, IF, IHC, WB
<b>Immunogen</b>	Synthesized peptide derived from human NGEP
<b>Immunogen Region</b>	850-930 aa, C-terminal
<b>Gene ID</b>	<a href="#">50636</a>
<b>Gene Symbol</b>	<a href="#">ANO7</a>
<b>Dilution range</b>	WB 1:500-1:2000IHC 1:100-1:300IF 1:200-1:1000ELISA 1:20000
<b>Specificity</b>	NGEP Polyclonal Antibody detects endogenous levels of NGEP protein.
<b>Tissue Specificity</b>	Specifically expressed in epithelial cells of the prostate (at protein level).
<b>Purification</b>	The antibody was affinity-purified from rabbit antiserum by affinity-chromatography using epitope-specific immunogen.
<b>Note</b>	For Research Use Only (RUO).
<b>Protein Name</b>	Anoctamin-7 Dresden transmembrane protein of the prostate D-TMPP IPCA-5 New gene expressed in prostate Prostate cancer-associated protein 5 Transmembrane protein 16G
<b>Molecular Weight</b>	105 kDa
<b>Clonality</b>	Polyclonal

<b>Conjugation</b>	Unconjugated
<b>Isotype</b>	IgG
<b>Formulation</b>	Liquid in PBS containing 50% glycerol, 0.5% BSA and 0.02% sodium azide.
<b>Concentration</b>	1 mg/ml
<b>Storage Instruction</b>	Store at -20°C, and avoid repeat freeze-thaw cycles.
<b>Database Links</b>	<a href="#">HGNC:31677OMIM:605096</a>
<b>Alternative Names</b>	Anoctamin-7 Dresden transmembrane protein of the prostate D-TMPP IPCA-5 New gene expressed in prostate Prostate cancer-associated protein 5 Transmembrane protein 16G
<b>Function</b>	Has calcium-dependent phospholipid scramblase activity; scrambles phosphatidylserine, phosphatidylcholine and galactosylceramide . Does not exhibit calcium-activated chloride channel (CaCC) activity. May play a role in cell-cell interactions.
<b>Cellular Localization</b>	Isoform 1: Cell membrane Cell junction Endoplasmic reticulum. Concentrates at sites of cell-cell contact . Shows an intracellular localization according to PubMed:22075693 and PubMed:20056604. Isoform 2: Cytoplasm, cytosol

---

**St John's Laboratory Ltd**

**F** +44 (0)207 681 2580

**T** +44 (0)208 223 3081

**W** <http://www.stjohnslabs.com/>

**E** [info@stjohnslabs.com](mailto:info@stjohnslabs.com)