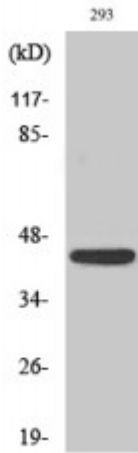


Anti-NKp46 antibody



Description	Rabbit polyclonal to NKp46.
--------------------	-----------------------------

Model	STJ94501
Host	Rabbit
Reactivity	Human
Applications	ELISA, WB
Immunogen	Synthesized peptide derived from human NKp46
Immunogen Region	120-200 aa, Internal
Gene ID	9437
Gene Symbol	NCR1
Dilution range	WB 1:500-1:2000ELISA 1:10000
Specificity	NKp46 Polyclonal Antibody detects endogenous levels of NKp46 protein.
Tissue Specificity	Selectively expressed by both resting and activated NK cells.
Purification	The antibody was affinity-purified from rabbit antiserum by affinity-chromatography using epitope-specific immunogen.
Note	For Research Use Only (RUO).
Protein Name	Natural cytotoxicity triggering receptor 1 Lymphocyte antigen 94 homolog NK cell-activating receptor Natural killer cell p46-related protein NK-p46 NKp46 hNKp46 CD antigen CD335
Molecular Weight	40 kDa
Clonality	Polyclonal

Conjugation	Unconjugated
Isotype	IgG
Formulation	Liquid in PBS containing 50% glycerol, 0.5% BSA and 0.02% sodium azide.
Concentration	1 mg/ml
Storage Instruction	Store at -20°C, and avoid repeat freeze-thaw cycles.
Database Links	HGNC:6731OMIM:604530
Alternative Names	Natural cytotoxicity triggering receptor 1 Lymphocyte antigen 94 homolog NK cell-activating receptor Natural killer cell p46-related protein NK-p46 NKp46 hNKp46 CD antigen CD335
Function	Cytotoxicity-activating receptor that may contribute to the increased efficiency of activated natural killer (NK) cells to mediate tumor cell lysis.
Cellular Localization	Cell membrane
Post-translational Modifications	N-glycosylated. O-glycosylated.

St John's Laboratory Ltd

F +44 (0)207 681 2580

T +44 (0)208 223 3081

W <http://www.stjohnslabs.com/>

E info@stjohnslabs.com