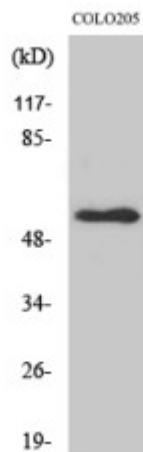


Anti-NPY5-R antibody



Description	Rabbit polyclonal to NPY5-R.
Model	STJ94550
Host	Rabbit
Reactivity	Human, Mouse, Rat
Applications	ELISA, IF, IHC, WB
Immunogen	Synthesized peptide derived from human NPY5-R
Immunogen Region	190-270 aa, Internal
Gene ID	4889
Gene Symbol	NPY5R
Dilution range	WB 1:500-1:2000IHC 1:100-1:300IF 1:200-1:1000ELISA 1:20000
Specificity	NPY5-R Polyclonal Antibody detects endogenous levels of NPY5-R protein.
Tissue Specificity	Brain; hypothalamus.
Purification	The antibody was affinity-purified from rabbit antiserum by affinity-chromatography using epitope-specific immunogen.
Note	For Research Use Only (RUO).
Protein Name	Neuropeptide Y receptor type 5 NPY5-R NPY-Y5 receptor NPYY5-R Y5 receptor
Molecular Weight	48 kDa
Clonality	Polyclonal

Conjugation	Unconjugated
Isotype	IgG
Formulation	Liquid in PBS containing 50% glycerol, 0.5% BSA and 0.02% sodium azide.
Concentration	1 mg/ml
Storage Instruction	Store at -20°C, and avoid repeat freeze-thaw cycles.
Database Links	HGNC:7958OMIM:602001
Alternative Names	Neuropeptide Y receptor type 5 NPY5-R NPY-Y5 receptor NPY5-R Y5 receptor
Function	Receptor for neuropeptide Y and peptide YY. The activity of this receptor is mediated by G proteins that inhibit adenylate cyclase activity. Seems to be associated with food intake. Could be involved in feeding disorders.
Cellular Localization	Cell membrane. Multi-pass membrane protein.

St John's Laboratory Ltd

F +44 (0)207 681 2580

T +44 (0)208 223 3081

W <http://www.stjohnslabs.com/>

E info@stjohnslabs.com