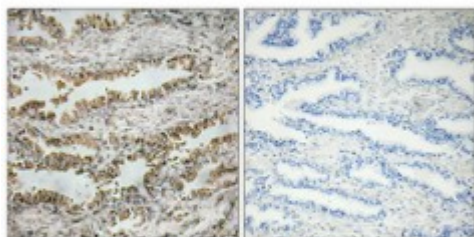


## Anti-NT-4 antibody



<b>Description</b>	Rabbit polyclonal to NT-4.
<b>Model</b>	STJ94562
<b>Host</b>	Rabbit
<b>Reactivity</b>	Human, Mouse, Rat
<b>Applications</b>	ELISA, IHC
<b>Immunogen</b>	Synthesized peptide derived from human NT-4.
<b>Immunogen Region</b>	Internal
<b>Gene ID</b>	<a href="#">4909</a>
<b>Gene Symbol</b>	<a href="#">NTF4</a>
<b>Dilution range</b>	IHC 1:100-1:300ELISA 1:10000
<b>Specificity</b>	NT-4 Polyclonal Antibody detects endogenous levels of NT-4 protein.
<b>Tissue Specificity</b>	Highest levels in prostate, lower levels in thymus, placenta, and skeletal muscle. Expressed in embryonic and adult tissues.
<b>Purification</b>	The antibody was affinity-purified from rabbit antiserum by affinity-chromatography using epitope-specific immunogen.
<b>Note</b>	For Research Use Only (RUO).
<b>Protein Name</b>	Neurotrophin-4 NT-4 Neurotrophin-5 NT-5 Neutrophic factor 4
<b>Molecular Weight</b>	22.427 kDa
<b>Clonality</b>	Polyclonal

<b>Conjugation</b>	Unconjugated
<b>Isotype</b>	IgG
<b>Formulation</b>	Liquid in PBS containing 50% glycerol, 0.5% BSA and 0.02% sodium azide.
<b>Concentration</b>	1 mg/ml
<b>Storage Instruction</b>	Store at -20°C, and avoid repeat freeze-thaw cycles.
<b>Database Links</b>	<a href="#">HGNC:8024OMIM:162662</a>
<b>Alternative Names</b>	Neurotrophin-4 NT-4 Neurotrophin-5 NT-5 Neutrophic factor 4
<b>Function</b>	Target-derived survival factor for peripheral sensory sympathetic neurons.
<b>Cellular Localization</b>	Secreted.

---

**St John's Laboratory Ltd**

**F** +44 (0)207 681 2580

**T** +44 (0)208 223 3081

**W** <http://www.stjohnslabs.com/>

**E** [info@stjohnslabs.com](mailto:info@stjohnslabs.com)