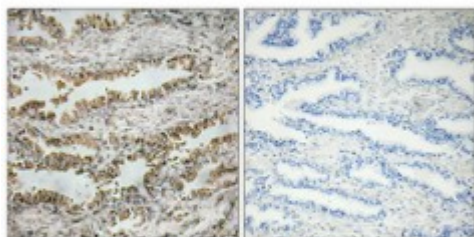


Anti-NT-4 antibody



Description	Rabbit polyclonal to NT-4.
Model	STJ94562
Host	Rabbit
Reactivity	Human, Mouse, Rat
Applications	ELISA, IHC
Immunogen	Synthesized peptide derived from human NT-4.
Immunogen Region	Internal
Gene ID	4909
Gene Symbol	NTF4
Dilution range	IHC 1:100-1:300ELISA 1:10000
Specificity	NT-4 Polyclonal Antibody detects endogenous levels of NT-4 protein.
Tissue Specificity	Highest levels in prostate, lower levels in thymus, placenta, and skeletal muscle. Expressed in embryonic and adult tissues.
Purification	The antibody was affinity-purified from rabbit antiserum by affinity-chromatography using epitope-specific immunogen.
Note	For Research Use Only (RUO).
Protein Name	Neurotrophin-4 NT-4 Neurotrophin-5 NT-5 Neutrophic factor 4
Molecular Weight	22.427 kDa
Clonality	Polyclonal

Conjugation	Unconjugated
Isotype	IgG
Formulation	Liquid in PBS containing 50% glycerol, 0.5% BSA and 0.02% sodium azide.
Concentration	1 mg/ml
Storage Instruction	Store at -20°C, and avoid repeat freeze-thaw cycles.
Database Links	HGNC:8024OMIM:162662
Alternative Names	Neurotrophin-4 NT-4 Neurotrophin-5 NT-5 Neutrophic factor 4
Function	Target-derived survival factor for peripheral sensory sympathetic neurons.
Cellular Localization	Secreted.

St John's Laboratory Ltd

F +44 (0)207 681 2580

T +44 (0)208 223 3081

W <http://www.stjohnslabs.com/>

E info@stjohnslabs.com