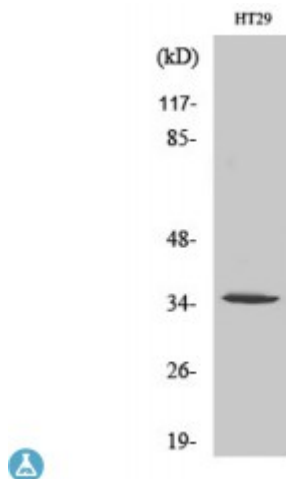


Anti-Olfactory receptor 2J2 antibody



Description	Rabbit polyclonal to Olfactory receptor 2J2.
Model	STJ94675
Host	Rabbit
Reactivity	Human
Applications	ELISA, IF, WB
Immunogen	Synthesized peptide derived from human Olfactory receptor 2J2
Immunogen Region	240-320 aa, C-terminal
Gene ID	26707
Gene Symbol	OR2J2
Dilution range	WB 1:500-1:2000IF 1:200-1:1000ELISA 1:20000
Specificity	Olfactory receptor 2J2 Polyclonal Antibody detects endogenous levels of Olfactory receptor 2J2 protein.
Purification	The antibody was affinity-purified from rabbit antiserum by affinity-chromatography using epitope-specific immunogen.
Note	For Research Use Only (RUO).
Protein Name	Olfactory receptor 2J2 Hs6M1-6 Olfactory receptor 6-8 OR6-8 Olfactory receptor OR6-19
Molecular Weight	35 kDa
Clonality	Polyclonal
Conjugation	Unconjugated

Isotype	IgG
Formulation	Liquid in PBS containing 50% glycerol, 0.5% BSA and 0.02% sodium azide.
Concentration	1 mg/ml
Storage Instruction	Store at -20°C, and avoid repeat freeze-thaw cycles.
Database Links	HGNC:8260 OMIM:NA
Alternative Names	Olfactory receptor 2J2 Hs6M1-6 Olfactory receptor 6-8 OR6-8 Olfactory receptor OR6-19

St John's Laboratory Ltd

F +44 (0)207 681 2580

T +44 (0)208 223 3081

W <http://www.stjohnslabs.com/>

E info@stjohnslabs.com