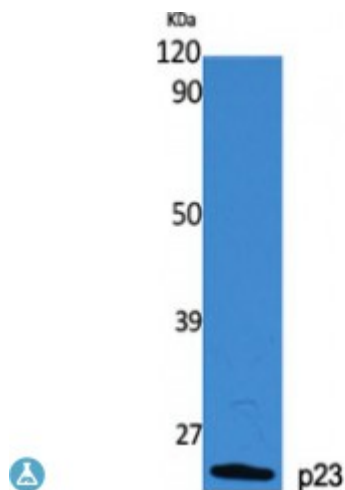


## Anti-p23 antibody



<b>Description</b>	Rabbit polyclonal to p23.
<b>Model</b>	STJ94863
<b>Host</b>	Rabbit
<b>Reactivity</b>	Human, Mouse, Rat
<b>Applications</b>	ELISA, IHC, WB
<b>Immunogen</b>	Synthesized peptide derived from human p23 around the non-phosphorylation site of S113.
<b>Immunogen Region</b>	50-130 aa
<b>Gene ID</b>	<a href="#">10728</a>
<b>Gene Symbol</b>	<a href="#">PTGES3</a>
<b>Dilution range</b>	WB 1:500-1:2000IHC 1:100-1:300ELISA 1:10000
<b>Specificity</b>	p23 Polyclonal Antibody detects endogenous levels of p23 protein.
<b>Purification</b>	The antibody was affinity-purified from rabbit antiserum by affinity-chromatography using epitope-specific immunogen.
<b>Note</b>	For Research Use Only (RUO).
<b>Protein Name</b>	Prostaglandin E synthase 3 Cytosolic prostaglandin E2 synthase cPGES Hsp90 co-chaperone Progesterone receptor complex p23 Telomerase-binding protein p23
<b>Molecular Weight</b>	24 kDa
<b>Clonality</b>	Polyclonal

<b>Conjugation</b>	Unconjugated
<b>Isotype</b>	IgG
<b>Formulation</b>	Liquid in PBS containing 50% glycerol, 0.5% BSA and 0.02% sodium azide.
<b>Concentration</b>	1 mg/ml
<b>Storage Instruction</b>	Store at -20°C, and avoid repeat freeze-thaw cycles.
<b>Database Links</b>	<a href="#">HGNC:16049OMIM:607061</a>
<b>Alternative Names</b>	Prostaglandin E synthase 3 Cytosolic prostaglandin E2 synthase cPGES Hsp90 co-chaperone Progesterone receptor complex p23 Telomerase-binding protein p23
<b>Function</b>	Cytosolic prostaglandin synthase that catalyzes the oxidoreduction of prostaglandin endoperoxide H2 (PGH2) to prostaglandin E2 (PGE2) . Molecular chaperone that localizes to genomic response elements in a hormone-dependent manner and disrupts receptor-mediated transcriptional activation, by promoting disassembly of transcriptional regulatory complexes . Facilitates HIF alpha proteins hydroxylation via interaction with EGLN1/PHD2, leading to recruit EGLN1/PHD2 to the HSP90 pathway .
<b>Sequence and Domain Family</b>	The PXLE motif mediates interaction with EGLN1/PHD2.
<b>Cellular Localization</b>	Cytoplasm

---

**St John's Laboratory Ltd**

**F** +44 (0)207 681 2580  
**T** +44 (0)208 223 3081

**W** <http://www.stjohnslabs.com/>  
**E** [info@stjohnslabs.com](mailto:info@stjohnslabs.com)