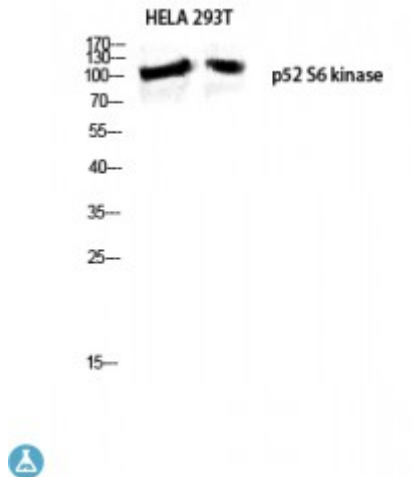


Anti-p52 S6 kinase antibody



Description	Rabbit polyclonal to p52 S6 kinase.
Model	STJ94888
Host	Rabbit
Reactivity	Human, Mouse
Applications	ELISA, IF, WB
Immunogen	Synthesized peptide derived from human p52 S6 kinase
Immunogen Region	200-280 aa, Internal
Gene ID	26750
Gene Symbol	RPS6KC1
Dilution range	WB 1:500-1:2000IF 1:200-1:1000ELISA 1:20000
Specificity	p52 S6 kinase Polyclonal Antibody detects endogenous levels of p52 S6 kinase protein.
Tissue Specificity	Highly expressed in testis, skeletal muscle, brain, heart, placenta, kidney and liver and weakly expressed in thymus, small intestine, lung and colon.
Purification	The antibody was affinity-purified from rabbit antiserum by affinity-chromatography using epitope-specific immunogen.
Note	For Research Use Only (RUO).
Protein Name	Ribosomal protein S6 kinase delta-1 S6K-delta-1 52 kDa ribosomal protein S6 kinase Ribosomal S6 kinase-like protein with two PSK domains 118 kDa protein SPHK1-binding protein

Molecular Weight	117 kDa
Clonality	Polyclonal
Conjugation	Unconjugated
Isotype	IgG
Formulation	Liquid in PBS containing 50% glycerol, 0.5% BSA and 0.02% sodium azide.
Concentration	1 mg/ml
Storage Instruction	Store at -20°C, and avoid repeat freeze-thaw cycles.
Database Links	HGNC:10439OMIM:617517
Alternative Names	Ribosomal protein S6 kinase delta-1 S6K-delta-1 52 kDa ribosomal protein S6 kinase Ribosomal S6 kinase-like protein with two PSK domains 118 kDa protein SPHK1-binding protein
Function	May be involved in transmitting sphingosine-1 phosphate (SPP)-mediated signaling into the cell.
Sequence and Domain Family	The first protein kinase domain appears to be a pseudokinase domain as it does not contain the classical characteristics, such as the ATP-binding motif, ATP-binding site and active site.
Cellular Localization	Cytoplasm Membrane. Also found in some small dot-like or ring-shaped early endosome structures.