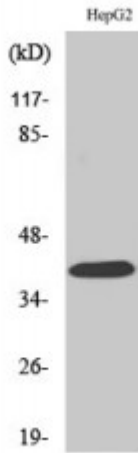


Anti-PAR-4 antibody



Description	Rabbit polyclonal to PAR-4.
Model	STJ94953
Host	Rabbit
Reactivity	Human, Mouse, Rat
Applications	ELISA, IF, WB
Immunogen	Synthesized peptide derived from human PAR-4
Immunogen Region	40-120 aa, Internal
Gene ID	9002
Gene Symbol	F2RL3
Dilution range	WB 1:500-1:2000IF 1:200-1:1000ELISA 1:10000
Specificity	PAR-4 Polyclonal Antibody detects endogenous levels of PAR-4 protein.
Tissue Specificity	Widely expressed, with highest levels in lung, pancreas, thyroid, testis and small intestine. Not expressed in brain, kidney, spinal cord and peripheral blood leukocytes. Also detected in platelets.
Purification	The antibody was affinity-purified from rabbit antiserum by affinity-chromatography using epitope-specific immunogen.
Note	For Research Use Only (RUO).
Protein Name	Proteinase-activated receptor 4 PAR-4 Coagulation factor II receptor-like 3 Thrombin receptor-like 3
Molecular Weight	41 kDa

Clonality	Polyclonal
Conjugation	Unconjugated
Isotype	IgG
Formulation	Liquid in PBS containing 50% glycerol, 0.5% BSA and 0.02% sodium azide.
Concentration	1 mg/ml
Storage Instruction	Store at -20°C, and avoid repeat freeze-thaw cycles.
Database Links	HGNC:35400MIM:602779
Alternative Names	Proteinase-activated receptor 4 PAR-4 Coagulation factor II receptor-like 3 Thrombin receptor-like 3
Function	Receptor for activated thrombin or trypsin coupled to G proteins that stimulate phosphoinositide hydrolysis. May play a role in platelets activation.
Cellular Localization	Cell membrane. Multi-pass membrane protein.
Post-translational Modifications	A proteolytic cleavage generates a new N-terminus that functions as a tethered ligand.

St John's Laboratory Ltd

F +44 (0)207 681 2580

T +44 (0)208 223 3081

W <http://www.stjohnslabs.com/>

E info@stjohnslabs.com