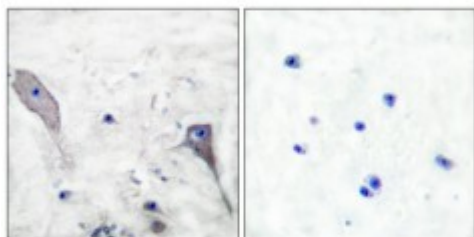


Anti-Patched antibody



Description	Rabbit polyclonal to Patched.
Model	STJ94963
Host	Rabbit
Reactivity	Human, Mouse
Applications	ELISA, IHC, WB
Immunogen	Synthesized peptide derived from human Patched
Immunogen Region	1-80 aa, N-terminal
Gene ID	5727
Gene Symbol	PTCH1
Dilution range	WB 1:500-1:2000IHC 1:100-1:300ELISA 1:10000
Specificity	Patched Polyclonal Antibody detects endogenous levels of Patched protein.
Tissue Specificity	In the adult, expressed in brain, lung, liver, heart, placenta, skeletal muscle, pancreas and kidney. Expressed in tumor cells but not in normal skin.
Purification	The antibody was affinity-purified from rabbit antiserum by affinity-chromatography using epitope-specific immunogen.
Note	For Research Use Only (RUO).
Protein Name	Protein patched homolog 1 PTC PTC1
Molecular Weight	160 kDa
Clonality	Polyclonal

Conjugation	Unconjugated
Isotype	IgG
Formulation	Liquid in PBS containing 50% glycerol, 0.5% BSA and 0.02% sodium azide.
Concentration	1 mg/ml
Storage Instruction	Store at -20°C, and avoid repeat freeze-thaw cycles.
Database Links	HGNC:95850MIM:109400
Alternative Names	Protein patched homolog 1 PTC PTC1
Function	Acts as a receptor for sonic hedgehog (SHH), indian hedgehog (IHH) and desert hedgehog (DHH). Associates with the smoothened protein (SMO) to transduce the hedgehog's proteins signal. Seems to have a tumor suppressor function, as inactivation of this protein is probably a necessary, if not sufficient step for tumorigenesis.
Cellular Localization	Membrane. Multi-pass membrane protein.
Post-translational Modifications	Glycosylation is necessary for SHH binding. In the absence of Hh ligands, ubiquitination by ITCH at Lys-1426 promotes endocytosis and both proteasomal and lysosomal degradation.