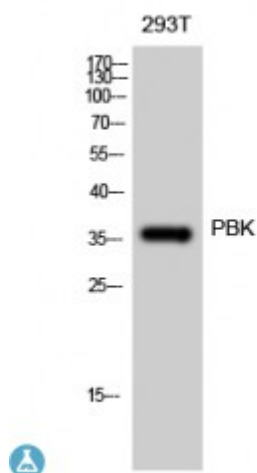


Anti-PBK antibody



Description	Rabbit polyclonal to PBK.
Model	STJ94976
Host	Rabbit
Reactivity	Human, Simian
Applications	ELISA, IHC, WB
Immunogen	Synthesized peptide derived from human PBK around the non-phosphorylation site of T9.
Immunogen Region	1-80 aa
Gene ID	55872
Gene Symbol	PBK
Dilution range	WB 1:500-1:2000IHC 1:100-1:300ELISA 1:5000
Specificity	PBK Polyclonal Antibody detects endogenous levels of PBK protein.
Tissue Specificity	Expressed in the testis and placenta. In the testis, restrictedly expressed in outer cell layer of seminiferous tubules.
Purification	The antibody was affinity-purified from rabbit antiserum by affinity-chromatography using epitope-specific immunogen.
Note	For Research Use Only (RUO).
Protein Name	Lymphokine-activated killer T-cell-originated protein kinase Cancer/testis antigen 84 CT84 MAPKK-like protein kinase Nori-3 PDZ-binding kinase Spermatogenesis-related protein kinase SPK T-LAK cell-originated

Molecular Weight	36 kDa
Clonality	Polyclonal
Conjugation	Unconjugated
Isotype	IgG
Formulation	Liquid in PBS containing 50% glycerol, 0.5% BSA and 0.02% sodium azide.
Concentration	1 mg/ml
Storage Instruction	Store at -20°C, and avoid repeat freeze-thaw cycles.
Database Links	HGNC:18282OMIM:611210
Alternative Names	Lymphokine-activated killer T-cell-originated protein kinase Cancer/testis antigen 84 CT84 MAPKK-like protein kinase Nori-3 PDZ-binding kinase Spermatogenesis-related protein kinase SPK T-LAK cell-originated
Function	Phosphorylates MAP kinase p38. Seems to be active only in mitosis. May also play a role in the activation of lymphoid cells. When phosphorylated, forms a complex with TP53, leading to TP53 destabilization and attenuation of G2/M checkpoint during doxorubicin-induced DNA damage.
Post-translational Modifications	Phosphorylated; in a cell-cycle dependent manner at mitosis.

St John's Laboratory Ltd

F +44 (0)207 681 2580

T +44 (0)208 223 3081

W <http://www.stjohnslabs.com/>

E info@stjohnslabs.com