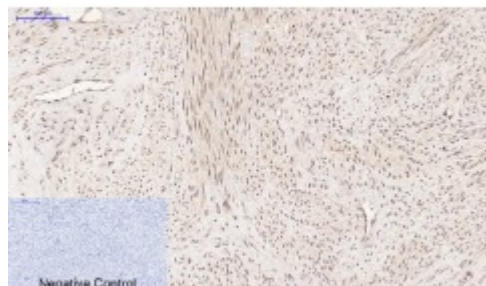


Anti-PDGF-B antibody



Description

PDGF-B is a protein encoded by the PDGFB gene which is approximately 27,2 kDa. PDGF-B is secreted into the extracellular space. It is involved in RET signalling, apoptotic pathways, GAB1 signalosome and the GPCR pathway. It is a growth factor that plays an essential role in the regulation of embryonic development, cell proliferation, cell migration, survival and chemotaxis. It is required for normal proliferation and recruitment of pericytes and vascular smooth muscle cells in the central nervous system, skin, lung, heart and placenta. It also plays an important role in wound healing. PDGF-B is expressed at high levels in the heart, brain, placenta and foetal kidney. Mutations in the PDGFB gene may result in basal ganglia calcification and familial meningioma. STJ94996 was affinity-purified from rabbit antiserum by affinity-chromatography using epitope-specific immunogen. This polyclonal antibody detects endogenous levels of PDGF-B protein.

Model	STJ94996
Host	Rabbit
Reactivity	Human, Mouse, Rat
Applications	ELISA, IHC, WB
Immunogen	Synthesized peptide derived from human PDGF-B
Immunogen Region	30-110 aa, Internal
Gene ID	5155
Gene Symbol	PDGFB
Dilution range	WB 1:500-1:2000 IHC 1:100-1:300 ELISA 1:10000

Specificity	PDGF-B Polyclonal Antibody detects endogenous levels of PDGF-B protein.
Tissue Specificity	Expressed at high levels in the heart, brain (sustantia nigra), placenta and fetal kidney. Expressed at moderate levels in the brain (hippocampus), skeletal muscle, kidney and lung.
Purification	The antibody was affinity-purified from rabbit antiserum by affinity-chromatography using epitope-specific immunogen.
Note	For Research Use Only (RUO).
Protein Name	Platelet-derived growth factor subunit B PDGF subunit B PDGF-2 Platelet-derived growth factor B chain Platelet-derived growth factor beta polypeptide Proto-oncogene c-Sis Becaplermin
Molecular Weight	27/22 kDa
Clonality	Polyclonal
Conjugation	Unconjugated
Isotype	IgG
Formulation	Liquid in PBS containing 50% glycerol, 0.5% BSA and 0.02% sodium azide.
Concentration	1 mg/ml
Storage Instruction	Store at -20°C, and avoid repeat freeze-thaw cycles.
Database Links	HGNC:88000MIM:190040
Alternative Names	Platelet-derived growth factor subunit B PDGF subunit B PDGF-2 Platelet-derived growth factor B chain Platelet-derived growth factor beta polypeptide Proto-oncogene c-Sis Becaplermin
Function	Growth factor that plays an essential role in the regulation of embryonic development, cell proliferation, cell migration, survival and chemotaxis. Potent mitogen for cells of mesenchymal origin . Required for normal proliferation and recruitment of pericytes and vascular smooth muscle cells in the central nervous system, skin, lung, heart and placenta. Required for normal blood vessel development, and for normal development of kidney glomeruli. Plays an important role in wound healing. Signaling is modulated by the formation of heterodimers with PDGFA .
Cellular Localization	Secreted. Released by platelets upon wounding.