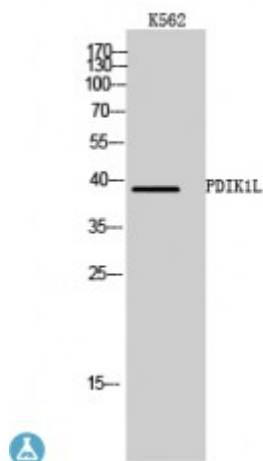


Anti-PDIK1L antibody



Description	Rabbit polyclonal to PDIK1L.
Model	STJ95007
Host	Rabbit
Reactivity	Human, Mouse
Applications	ELISA, IHC, WB
Immunogen	Synthesized peptide derived from human PDIK1L
Immunogen Region	70-150 aa, Internal
Gene ID	149420
Gene Symbol	PDIK1L
Dilution range	WB 1:500-1:2000IHC 1:100-1:300ELISA 1:40000
Specificity	PDIK1L Polyclonal Antibody detects endogenous levels of PDIK1L protein.
Tissue Specificity	Expressed in liver, kidney, pancreas, spleen, thymus and prostate.
Purification	The antibody was affinity-purified from rabbit antiserum by affinity-chromatography using epitope-specific immunogen.
Note	For Research Use Only (RUO).
Protein Name	Serine/threonine-protein kinase PDIK1L PDLIM1-interacting kinase 1-like
Molecular Weight	39 kDa
Clonality	Polyclonal
Conjugation	Unconjugated

Isotype	IgG
Formulation	Liquid in PBS containing 50% glycerol, 0.5% BSA and 0.02% sodium azide.
Concentration	1 mg/ml
Storage Instruction	Store at -20°C, and avoid repeat freeze-thaw cycles.
Database Links	HGNC:18981OMIM:610785
Alternative Names	Serine/threonine-protein kinase PDIK1L PDLIM1-interacting kinase 1-like
Cellular Localization	Nucleus

St John's Laboratory Ltd

F +44 (0)207 681 2580

T +44 (0)208 223 3081

W <http://www.stjohnslabs.com/>

E info@stjohnslabs.com