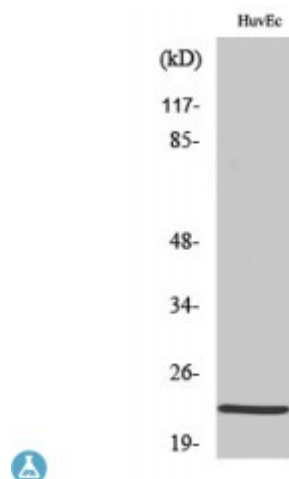


Anti-PEBP beta antibody



Description	Rabbit polyclonal to PEBP2beta.
Model	STJ95022
Host	Rabbit
Reactivity	Human, Mouse, Rat
Applications	ELISA, IF, IHC, WB
Immunogen	Synthesized peptide derived from human PEBP2beta
Immunogen Region	30-110 aa, N-terminal
Gene ID	865
Gene Symbol	CBFB
Dilution range	WB 1:500-1:2000IHC 1:100-1:300IF 1:200-1:1000ELISA 1:20000
Specificity	PEBP2beta Polyclonal Antibody detects endogenous levels of PEBP2beta protein.
Purification	The antibody was affinity-purified from rabbit antiserum by affinity-chromatography using epitope-specific immunogen.
Note	For Research Use Only (RUO).
Protein Name	Core-binding factor subunit beta CBF-beta Polyomavirus enhancer-binding protein 2 beta subunit PEA2-beta PEBP2-beta SL3-3 enhancer factor 1 subunit beta SL3/AKV core-binding factor beta subunit
Molecular Weight	22 kDa
Clonality	Polyclonal

Conjugation	Unconjugated
Isotype	IgG
Formulation	Liquid in PBS containing 50% glycerol, 0.5% BSA and 0.02% sodium azide.
Concentration	1 mg/ml
Storage Instruction	Store at -20°C, and avoid repeat freeze-thaw cycles.
Database Links	HGNC:1539OMIM:121360
Alternative Names	Core-binding factor subunit beta CBF-beta Polyomavirus enhancer-binding protein 2 beta subunit PEA2-beta PEBP2-beta SL3-3 enhancer factor 1 subunit beta SL3/AKV core-binding factor beta subunit
Function	CBF binds to the core site, 5'-PYGPYGGT-3', of a number of enhancers and promoters, including murine leukemia virus, polyomavirus enhancer, T-cell receptor enhancers, LCK, IL3 and GM-CSF promoters. CBFB enhances DNA binding by RUNX1.
Cellular Localization	Nucleus

St John's Laboratory Ltd

F +44 (0)207 681 2580

T +44 (0)208 223 3081

W <http://www.stjohnslabs.com/>

E info@stjohnslabs.com