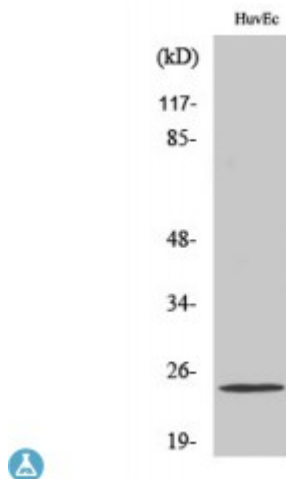


Anti-PGRMC2 antibody



Description	Rabbit polyclonal to PGRMC2.
Model	STJ95058
Host	Rabbit
Reactivity	Human, Mouse, Rat
Applications	ELISA, WB
Immunogen	Synthesized peptide derived from human PGRMC2
Immunogen Region	150-230 aa, C-terminal
Gene ID	10424
Gene Symbol	PGRMC2
Dilution range	WB 1:500-1:2000ELISA 1:5000
Specificity	PGRMC2 Polyclonal Antibody detects endogenous levels of PGRMC2 protein.
Purification	The antibody was affinity-purified from rabbit antiserum by affinity-chromatography using epitope-specific immunogen.
Note	For Research Use Only (RUO).
Protein Name	Membrane-associated progesterone receptor component 2 Progesterone membrane-binding protein Steroid receptor protein DG6
Molecular Weight	25 kDa
Clonality	Polyclonal
Conjugation	Unconjugated

Isotype	IgG
Formulation	Liquid in PBS containing 50% glycerol, 0.5% BSA and 0.02% sodium azide.
Concentration	1 mg/ml
Storage Instruction	Store at -20°C, and avoid repeat freeze-thaw cycles.
Database Links	HGNC:16089OMIM:607735
Alternative Names	Membrane-associated progesterone receptor component 2 Progesterone membrane-binding protein Steroid receptor protein DG6
Function	Receptor for steroids.
Sequence and Domain Family	The cytochrome b5 heme-binding domain lacks the conserved iron-binding His residues at positions 137 and 161.
Cellular Localization	Membrane

St John's Laboratory Ltd

F +44 (0)207 681 2580

T +44 (0)208 223 3081

W <http://www.stjohnslabs.com/>

E info@stjohnslabs.com