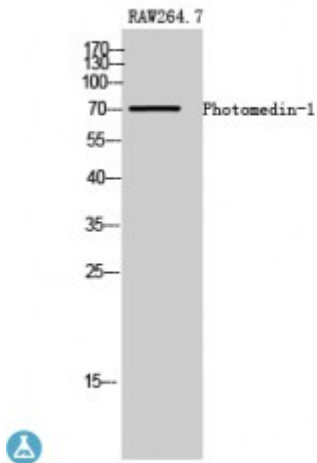


Anti-Photomedin-1 antibody



Description

Rabbit polyclonal to Photomedin-1.

Model	STJ95070
Host	Rabbit
Reactivity	Human
Applications	ELISA, IF, WB
Immunogen	Synthesized peptide derived from human Photomedin-1
Immunogen Region	280-360 aa, Internal
Gene ID	169611
Gene Symbol	OLFML2A
Dilution range	WB 1:500-1:2000IF 1:200-1:1000ELISA 1:10000
Specificity	Photomedin-1 Polyclonal Antibody detects endogenous levels of Photomedin-1 protein.
Tissue Specificity	In the kidney expressed only by podocytes, wherein they localize to major processes.
Purification	The antibody was affinity-purified from rabbit antiserum by affinity-chromatography using epitope-specific immunogen.
Note	For Research Use Only (RUO).
Protein Name	Olfactomedin-like protein 2A Photomedin-1
Molecular Weight	73 kDa
Clonality	Polyclonal

Conjugation	Unconjugated
Isotype	IgG
Formulation	Liquid in PBS containing 50% glycerol, 0.5% BSA and 0.02% sodium azide.
Concentration	1 mg/ml
Storage Instruction	Store at -20°C, and avoid repeat freeze-thaw cycles.
Database Links	HGNC:27270MIM:615899
Alternative Names	Olfactomedin-like protein 2A Photomedin-1
Cellular Localization	Secreted. Localizes to the podocyte major processes. Colocalized with the major process protein VIM throughout podocyte development.
Post-translational Modifications	May be cleaved at Lys-295 after secretion. O-glycosylated but not N-glycosylated.

St John's Laboratory Ltd

F +44 (0)207 681 2580

T +44 (0)208 223 3081

W <http://www.stjohnslabs.com/>

E info@stjohnslabs.com