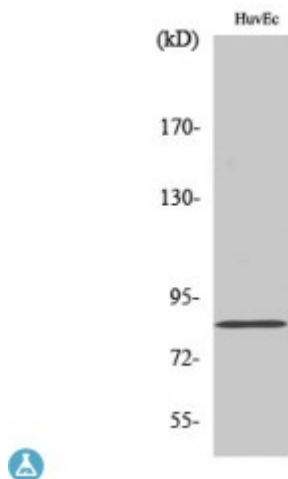


Anti-Photomedin-2 antibody



Description	Rabbit polyclonal to Photomedin-2.
Model	STJ95071
Host	Rabbit
Reactivity	Human, Mouse
Applications	ELISA, IF, IHC, WB
Immunogen	Synthesized peptide derived from human Photomedin-2
Immunogen Region	140-220 aa, Internal
Gene ID	25903
Gene Symbol	OLFML2B
Dilution range	WB 1:500-1:2000IHC 1:100-1:300IF 1:200-1:1000ELISA 1:10000
Specificity	Photomedin-2 Polyclonal Antibody detects endogenous levels of Photomedin-2 protein.
Purification	The antibody was affinity-purified from rabbit antiserum by affinity-chromatography using epitope-specific immunogen.
Note	For Research Use Only (RUO).
Protein Name	Olfactomedin-like protein 2B Photomedin-2
Molecular Weight	84 kDa
Clonality	Polyclonal
Conjugation	Unconjugated

Isotype	IgG
Formulation	Liquid in PBS containing 50% glycerol, 0.5% BSA and 0.02% sodium azide.
Concentration	1 mg/ml
Storage Instruction	Store at -20°C, and avoid repeat freeze-thaw cycles.
Database Links	HGNC:24558 OMIM:NA
Alternative Names	Olfactomedin-like protein 2B Photomedin-2
Cellular Localization	Secreted
Post-translational Modifications	O-glycosylated and N-glycosylated.

St John's Laboratory Ltd

F +44 (0)207 681 2580
T +44 (0)208 223 3081

W <http://www.stjohnslabs.com/>
E info@stjohnslabs.com