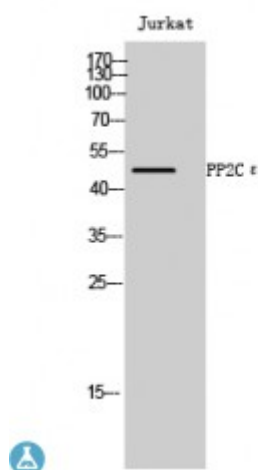


Anti-PP2 epsilon antibody



Description	Rabbit polyclonal to PP2Cepsilon.
Model	STJ95196
Host	Rabbit
Reactivity	Human, Mouse, Rat
Applications	ELISA, WB
Immunogen	Synthesized peptide derived from human PP2Cepsilon
Immunogen Region	90-170 aa, Internal
Gene ID	151742
Gene Symbol	PPM1L
Dilution range	WB 1:500-1:2000ELISA 1:10000
Specificity	PP2Cepsilon Polyclonal Antibody detects endogenous levels of PP2Cepsilon protein.
Tissue Specificity	Ubiquitous. Highly expressed in heart, placenta, lung, liver, kidney and pancreas.
Purification	The antibody was affinity-purified from rabbit antiserum by affinity-chromatography using epitope-specific immunogen.
Note	For Research Use Only (RUO).
Protein Name	Protein phosphatase 1L Protein phosphatase 1-like Protein phosphatase 2C isoform epsilon PP2C-epsilon
Molecular Weight	48 kDa

Clonality	Polyclonal
Conjugation	Unconjugated
Isotype	IgG
Formulation	Liquid in PBS containing 50% glycerol, 0.5% BSA and 0.02% sodium azide.
Concentration	1 mg/ml
Storage Instruction	Store at -20°C, and avoid repeat freeze-thaw cycles.
Database Links	HGNC:16381OMIM:611931
Alternative Names	Protein phosphatase 1L Protein phosphatase 1-like Protein phosphatase 2C isoform epsilon PP2C-epsilon
Function	Acts as a suppressor of the SAPK signaling pathways by associating with and dephosphorylating MAP3K7/TAK1 and MAP3K5, and by attenuating the association between MAP3K7/TAK1 and MAP2K4 or MAP2K6.
Cellular Localization	Membrane

St John's Laboratory Ltd

F +44 (0)207 681 2580

T +44 (0)208 223 3081

W <http://www.stjohnslabs.com/>

E info@stjohnslabs.com