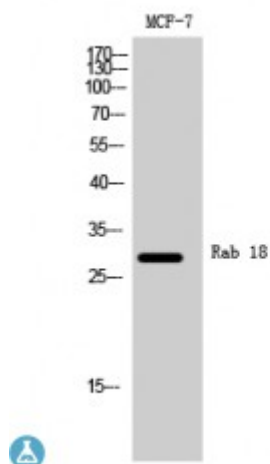


Anti-Rab 18 antibody



Description	Rabbit polyclonal to Rab 18.
Model	STJ95285
Host	Rabbit
Reactivity	Human, Mouse, Rat
Applications	ELISA, WB
Immunogen	Synthesized peptide derived from human Rab 18
Immunogen Region	80-160 aa, Internal
Gene ID	22931
Gene Symbol	RAB18
Dilution range	WB 1:500-1:2000ELISA 1:10000
Specificity	Rab 18 Polyclonal Antibody detects endogenous levels of Rab 18 protein.
Tissue Specificity	Ubiquitous.
Purification	The antibody was affinity-purified from rabbit antiserum by affinity-chromatography using epitope-specific immunogen.
Note	For Research Use Only (RUO).
Protein Name	Ras-related protein Rab-18
Molecular Weight	28 kDa
Clonality	Polyclonal
Conjugation	Unconjugated

Isotype	IgG
Formulation	Liquid in PBS containing 50% glycerol, 0.5% BSA and 0.02% sodium azide.
Concentration	1 mg/ml
Storage Instruction	Store at -20°C, and avoid repeat freeze-thaw cycles.
Database Links	HGNC:14244 OMIM:602207
Alternative Names	Ras-related protein Rab-18
Function	Plays a role in apical endocytosis/recycling. May be implicated in transport between the plasma membrane and early endosomes. Plays a key role in eye and brain development and neurodegeneration.
Cellular Localization	Cell membrane

St John's Laboratory Ltd

F +44 (0)207 681 2580

T +44 (0)208 223 3081

W <http://www.stjohnslabs.com/>

E info@stjohnslabs.com