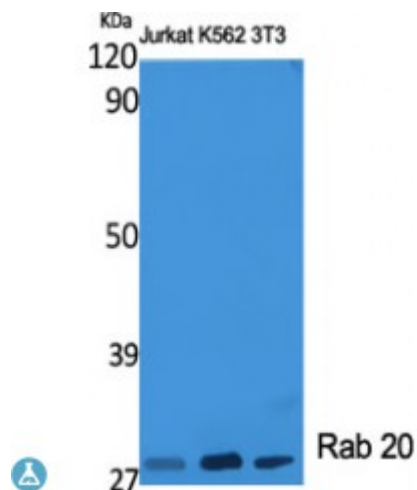


Anti-Rab 20 antibody



Description	Rabbit polyclonal to Rab 20.
Model	STJ95287
Host	Rabbit
Reactivity	Human
Applications	ELISA, IHC, WB
Immunogen	Synthesized peptide derived from human Rab 20
Immunogen Region	90-170 aa, Internal
Gene ID	55647
Gene Symbol	RAB20
Dilution range	WB 1:500-1:2000IHC 1:100-1:300ELISA 1:10000
Specificity	Rab 20 Polyclonal Antibody detects endogenous levels of Rab 20 protein.
Tissue Specificity	Low or absent expression in normal pancreas and stronger expression in 15 of 18 exocrine pancreatic adenocarcinomas (at protein level).
Purification	The antibody was affinity-purified from rabbit antiserum by affinity-chromatography using epitope-specific immunogen.
Note	For Research Use Only (RUO).
Protein Name	Ras-related protein Rab-20
Molecular Weight	28 kDa
Clonality	Polyclonal

Conjugation	Unconjugated
Isotype	IgG
Formulation	Liquid in PBS containing 50% glycerol, 0.5% BSA and 0.02% sodium azide.
Concentration	1 mg/ml
Storage Instruction	Store at -20°C, and avoid repeat freeze-thaw cycles.
Database Links	HGNC:18260 OMIM:NA
Alternative Names	Ras-related protein Rab-20
Function	Plays a role in apical endocytosis/recycling. Plays a role in the maturation and acidification of phagosomes that engulf pathogens, such as S.aureus and M.tuberculosis. Plays a role in the fusion of phagosomes with lysosomes.
Cellular Localization	Golgi apparatus Cytoplasmic vesicle, phagosome Cytoplasmic vesicle, phagosome membrane. Highly enriched on apical endocytic structures in polarized epithelial cells of kidney proximal tubules . Recruited to phagosomes containing S.aureus or M.tuberculosis .

St John's Laboratory Ltd

F +44 (0)207 681 2580

T +44 (0)208 223 3081

W <http://www.stjohnslabs.com/>

E info@stjohnslabs.com