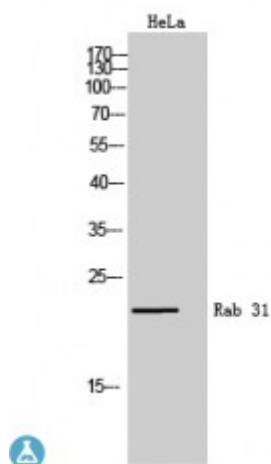


Anti-Rab 31 antibody



Description	Rabbit polyclonal to Rab 31.
Model	STJ95293
Host	Rabbit
Reactivity	Human, Mouse, Rat
Applications	ELISA, WB
Immunogen	Synthesized peptide derived from human Rab 31
Immunogen Region	50-130 aa, Internal
Gene ID	11031
Gene Symbol	RAB31
Dilution range	WB 1:500-1:2000ELISA 1:20000
Specificity	Rab 31 Polyclonal Antibody detects endogenous levels of Rab 31 protein.
Purification	The antibody was affinity-purified from rabbit antiserum by affinity-chromatography using epitope-specific immunogen.
Note	For Research Use Only (RUO).
Protein Name	Ras-related protein Rab-31 Ras-related protein Rab-22B
Molecular Weight	21 kDa
Clonality	Polyclonal
Conjugation	Unconjugated
Isotype	IgG

Formulation	Liquid in PBS containing 50% glycerol, 0.5% BSA and 0.02% sodium azide.
Concentration	1 mg/ml
Storage Instruction	Store at -20°C, and avoid repeat freeze-thaw cycles.
Database Links	HGNC:9771OMIM:605694
Alternative Names	Ras-related protein Rab-31 Ras-related protein Rab-22B

St John's Laboratory Ltd

F +44 (0)207 681 2580

T +44 (0)208 223 3081

W <http://www.stjohnslabs.com/>

E info@stjohnslabs.com