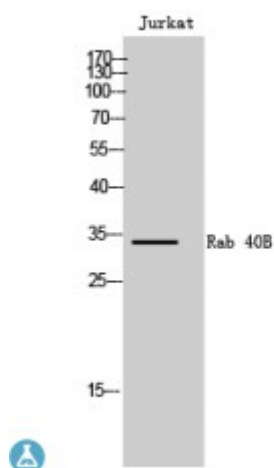


Anti-Rab 40B antibody



Description	Rabbit polyclonal to Rab 40B.
Model	STJ95299
Host	Rabbit
Reactivity	Human
Applications	ELISA, WB
Immunogen	Synthesized peptide derived from human Rab 40B
Immunogen Region	210-290 aa, C-terminal
Gene ID	10966
Gene Symbol	RAB40B
Dilution range	WB 1:500-1:2000ELISA 1:40000
Specificity	Rab 40B Polyclonal Antibody detects endogenous levels of Rab 40B protein.
Purification	The antibody was affinity-purified from rabbit antiserum by affinity-chromatography using epitope-specific immunogen.
Note	For Research Use Only (RUO).
Protein Name	Ras-related protein Rab-40B SOCS box-containing protein RAR Protein Rar
Molecular Weight	34 kDa
Clonality	Polyclonal
Conjugation	Unconjugated
Isotype	IgG

Formulation	Liquid in PBS containing 50% glycerol, 0.5% BSA and 0.02% sodium azide.
Concentration	1 mg/ml
Storage Instruction	Store at -20°C, and avoid repeat freeze-thaw cycles.
Database Links	HGNC:18284 OMIM:NA
Alternative Names	Ras-related protein Rab-40B SOCS box-containing protein RAR Protein Rar
Function	May be a substrate-recognition component of a SCF-like ECS (Elongin-Cullin-SOCS-box protein) E3 ubiquitin ligase complex which mediates the ubiquitination and subsequent proteasomal degradation of target proteins.
Sequence and Domain Family	The SOCS box domain mediates the interaction with the Elongin BC complex, an adapter module in different E3 ubiquitin ligase complexes.
Cellular Localization	Cell membrane

St John's Laboratory Ltd

F +44 (0)207 681 2580

T +44 (0)208 223 3081

W <http://www.stjohnslabs.com/>

E info@stjohnslabs.com