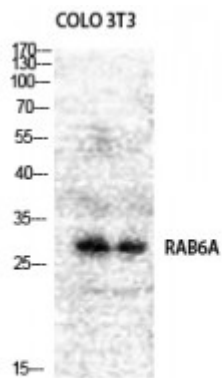


Anti-Rab 6A antibody



Description	Rabbit polyclonal to Rab 6A.
Model	STJ95302
Host	Rabbit
Reactivity	Human, Mouse, Rat
Applications	ELISA, IHC, WB
Immunogen	Synthesized peptide derived from human Rab 6A
Immunogen Region	90-170 aa, Internal
Gene ID	5870
Gene Symbol	RAB6A
Dilution range	WB 1:500-1:2000IHC 1:100-1:300ELISA 1:20000
Specificity	Rab 6A Polyclonal Antibody detects endogenous levels of Rab 6A protein.
Tissue Specificity	Ubiquitous.
Purification	The antibody was affinity-purified from rabbit antiserum by affinity-chromatography using epitope-specific immunogen.
Note	For Research Use Only (RUO).
Protein Name	Ras-related protein Rab-6A Rab-6
Molecular Weight	24 kDa
Clonality	Polyclonal
Conjugation	Unconjugated

Isotype	IgG
Formulation	Liquid in PBS containing 50% glycerol, 0.5% BSA and 0.02% sodium azide.
Concentration	1 mg/ml
Storage Instruction	Store at -20°C, and avoid repeat freeze-thaw cycles.
Database Links	HGNC:9786OMIM:179513
Alternative Names	Ras-related protein Rab-6A Rab-6
Function	Protein transport. Regulator of membrane traffic from the Golgi apparatus towards the endoplasmic reticulum (ER). Has a low GTPase activity. Involved in COPI-independent retrograde transport from the Golgi to the ER .
Cellular Localization	Golgi apparatus membrane. BICD2 facilitates its targeting to Golgi apparatus membrane. Isoform 1: Golgi apparatus membrane Isoform 2: Golgi apparatus membrane
Post-translational Modifications	Prenylated.

St John's Laboratory Ltd

F +44 (0)207 681 2580

T +44 (0)208 223 3081

W <http://www.stjohnslabs.com/>

E info@stjohnslabs.com