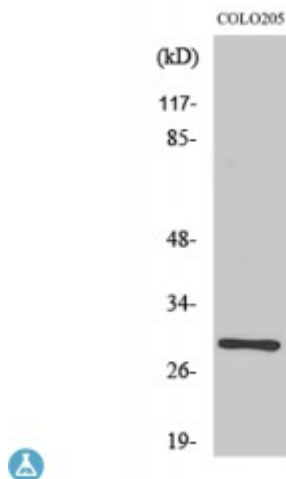


Anti-Rab 6C antibody



Description	Rabbit polyclonal to Rab 6C.
Model	STJ95303
Host	Rabbit
Reactivity	Human, Mouse, Rat
Applications	ELISA, WB
Immunogen	Synthesized peptide derived from human Rab 6C
Immunogen Region	140-220 aa, Internal
Gene ID	84084
Gene Symbol	RAB6C
Dilution range	WB 1:500-1:2000ELISA 1:40000
Specificity	Rab 6C Polyclonal Antibody detects endogenous levels of Rab 6C protein.
Tissue Specificity	Highest levels are found in fetal and adult brain, prostate, testis and spinal cord. Undetectable expression in adrenal gland, skeletal muscle, bone marrow, fetal, and adult liver, heart, salivary gland, and trachea. Detected in the HEK293, HEK293T, LNCaP, MCF-7, T-47D and EVSA-T cell lines (at protein level).
Purification	The antibody was affinity-purified from rabbit antiserum by affinity-chromatography using epitope-specific immunogen.
Note	For Research Use Only (RUO).
Protein Name	Ras-related protein Rab-6C Rab6-like protein WTH3

Molecular Weight	28 kDa
Clonality	Polyclonal
Conjugation	Unconjugated
Isotype	IgG
Formulation	Liquid in PBS containing 50% glycerol, 0.5% BSA and 0.02% sodium azide.
Concentration	1 mg/ml
Storage Instruction	Store at -20°C, and avoid repeat freeze-thaw cycles.
Database Links	HGNC:16525OMIM:612909
Alternative Names	Ras-related protein Rab-6C Rab6-like protein WTH3
Function	May be involved in the regulation of centrosome duplication and cell cycle progression.
Cellular Localization	Nucleus Cytoplasm Cytoplasm, cytoskeleton, microtubule organizing center, centrosome

St John's Laboratory Ltd

F +44 (0)207 681 2580

T +44 (0)208 223 3081

W <http://www.stjohnslabs.com/>

E info@stjohnslabs.com