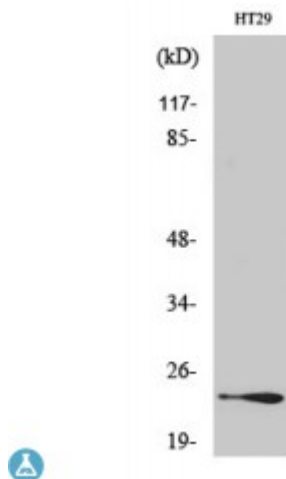


## Anti-Rab 7L1 antibody



<b>Description</b>	Rabbit polyclonal to Rab 7L1.
<b>Model</b>	STJ95304
<b>Host</b>	Rabbit
<b>Reactivity</b>	Human, Mouse, Rat
<b>Applications</b>	ELISA, WB
<b>Immunogen</b>	Synthesized peptide derived from human Rab 7L1
<b>Immunogen Region</b>	90-170 aa, Internal
<b>Gene ID</b>	<a href="#">8934</a>
<b>Gene Symbol</b>	<a href="#">RAB29</a>
<b>Dilution range</b>	WB 1:500-1:2000ELISA 1:20000
<b>Specificity</b>	Rab 7L1 Polyclonal Antibody detects endogenous levels of Rab 7L1 protein.
<b>Tissue Specificity</b>	Ubiquitous.
<b>Purification</b>	The antibody was affinity-purified from rabbit antiserum by affinity-chromatography using epitope-specific immunogen.
<b>Note</b>	For Research Use Only (RUO).
<b>Protein Name</b>	Ras-related protein Rab-7L1 Rab-7-like protein 1 Ras-related protein Rab-29
<b>Molecular Weight</b>	73 kDa
<b>Clonality</b>	Polyclonal
<b>Conjugation</b>	Unconjugated

<b>Isotype</b>	IgG
<b>Formulation</b>	Liquid in PBS containing 50% glycerol, 0.5% BSA and 0.02% sodium azide.
<b>Concentration</b>	1 mg/ml
<b>Storage Instruction</b>	Store at -20°C, and avoid repeat freeze-thaw cycles.
<b>Database Links</b>	<a href="https://www.ncbi.nlm.nih.gov/condensedbook/condensedbook.cgi?acc=HGNC:97890MIM:603949">HGNC:97890MIM:603949</a>
<b>Alternative Names</b>	Ras-related protein Rab-7L1 Rab-7-like protein 1 Ras-related protein Rab-29
<b>Function</b>	Rab GTPase key regulator in vesicle trafficking. Essential for maintaining the integrity of the endosome-trans-Golgi network structure. Together with LRRK2, plays a role in the retrograde trafficking pathway for recycling proteins, such as mannose 6 phosphate receptor (M6PR), between lysosomes and the Golgi apparatus in a retromer-dependent manner. Regulates neuronal process morphology in the intact central nervous system (CNS). May play a role in the formation of typhoid toxin transport intermediates during <i>Salmonella enterica</i> serovar Typhi (S.Typhi) epithelial cell infection.
<b>Cellular Localization</b>	Cell membrane Cytoplasm Cytoplasm, perinuclear region Golgi apparatus Golgi apparatus, trans-Golgi network Vacuole Cytoplasm, cytoskeleton. Colocalizes with LRRK2 along tubular structures emerging from Golgi apparatus . Colocalizes with GM130 at the Golgi apparatus . Colocalizes with dynamic tubules emerging from and retracting to the Golgi apparatus . Colocalizes with TGN46 at the trans-Golgi network (TGN) . In <i>Salmonella enterica</i> serovar Typhi (S.Typhi) infected epithelial cells, is recruited and colocalized with both S.Typhi-containing vacuoles and dynamic tubules as well as those emerging from the vacuole toward the cell periphery .
<b>Post-translational Modifications</b>	In case of <i>Salmonella enterica</i> serovar Typhimurium (S.Typhimurium) infection, is proteolytically cleaved between Gly-41 and Val-42 by the GtgE viral protease encoded on the Gifsy-2 lysogen bacteriophage, which therefore prevents the recruitment of RAB29 to S.Typhimurium-containing vacuoles. In contrast, no proteolytically cleavage is detected in S.Typhi-infected cells .