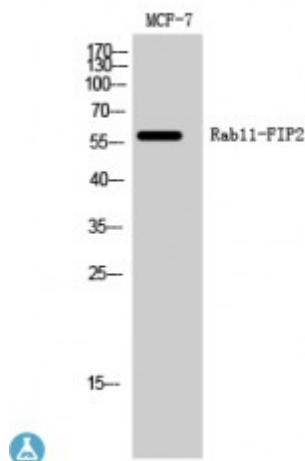


## Anti-Rab11-FIP2 antibody



<b>Description</b>	Rabbit polyclonal to Rab11-FIP2.
<b>Model</b>	STJ95308
<b>Host</b>	Rabbit
<b>Reactivity</b>	Human, Mouse
<b>Applications</b>	ELISA, WB
<b>Immunogen</b>	Synthesized peptide derived from human Rab11-FIP2
<b>Immunogen Region</b>	310-390 aa, Internal
<b>Gene ID</b>	<a href="#">22841</a>
<b>Gene Symbol</b>	<a href="#">RAB11FIP2</a>
<b>Dilution range</b>	WB 1:500-1:2000ELISA 1:10000
<b>Specificity</b>	Rab11-FIP2 Polyclonal Antibody detects endogenous levels of Rab11-FIP2 protein.
<b>Purification</b>	The antibody was affinity-purified from rabbit antiserum by affinity-chromatography using epitope-specific immunogen.
<b>Note</b>	For Research Use Only (RUO).
<b>Protein Name</b>	Rab11 family-interacting protein 2 Rab11-FIP2 NRip11
<b>Molecular Weight</b>	58 kDa
<b>Clonality</b>	Polyclonal
<b>Conjugation</b>	Unconjugated

<b>Isotype</b>	IgG
<b>Formulation</b>	Liquid in PBS containing 50% glycerol, 0.5% BSA and 0.02% sodium azide.
<b>Concentration</b>	1 mg/ml
<b>Storage Instruction</b>	Store at -20°C, and avoid repeat freeze-thaw cycles.
<b>Database Links</b>	<a href="#">HGNC:29152</a> <a href="#">OMIM:608599</a>
<b>Alternative Names</b>	Rab11 family-interacting protein 2 Rab11-FIP2 NRip11
<b>Function</b>	A Rab11 effector binding preferentially phosphatidylinositol 3,4,5-trisphosphate (PtdInsP3) and phosphatidic acid (PA) and acting in the regulation of the transport of vesicles from the endosomal recycling compartment (ERC) to the plasma membrane. Involved in insulin granule exocytosis. Also involved in receptor-mediated endocytosis and membrane trafficking of recycling endosomes, probably originating from clathrin-coated vesicles. Required in a complex with MYO5B and RAB11 for the transport of NPC1L1 to the plasma membrane. Also acts as a regulator of cell polarity.
<b>Cellular Localization</b>	Cell membrane. Peripheral membrane protein. Recycling endosome membrane. Peripheral membrane protein. Translocates with RAB11A from the vesicles of the endocytic recycling compartment (ERC) to the plasma membrane.
<b>Post-translational Modifications</b>	Phosphorylation at Ser-227 by MARK2 regulates epithelial cell polarity.