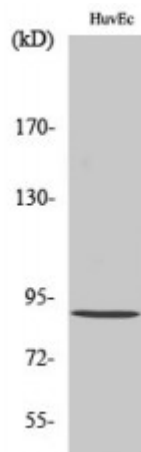


Anti-Rabenosyn-5 antibody



Description	Rabbit polyclonal to Rabenosyn-5.
Model	STJ95314
Host	Rabbit
Reactivity	Human, Mouse
Applications	ELISA, WB
Immunogen	Synthesized peptide derived from human Rabenosyn-5
Immunogen Region	120-200 aa, Internal
Gene ID	64145
Gene Symbol	RBSN
Dilution range	WB 1:500-1:2000ELISA 1:10000
Specificity	Rabenosyn-5 Polyclonal Antibody detects endogenous levels of Rabenosyn-5 protein.
Purification	The antibody was affinity-purified from rabbit antiserum by affinity-chromatography using epitope-specific immunogen.
Note	For Research Use Only (RUO).
Protein Name	Rabenosyn-5 110 kDa protein FYVE finger-containing Rab5 effector protein rabenosyn-5 RAB effector RBSN Zinc finger FYVE domain-containing protein 20
Molecular Weight	89 kDa
Clonality	Polyclonal

Conjugation	Unconjugated
Isotype	IgG
Formulation	Liquid in PBS containing 50% glycerol, 0.5% BSA and 0.02% sodium azide.
Concentration	1 mg/ml
Storage Instruction	Store at -20°C, and avoid repeat freeze-thaw cycles.
Database Links	HGNC:20759OMIM:609511
Alternative Names	Rabenosyn-5 110 kDa protein FYVE finger-containing Rab5 effector protein rabenosyn-5 RAB effector RBSN Zinc finger FYVE domain-containing protein 20
Function	Rab4/Rab5 effector protein acting in early endocytic membrane fusion and membrane trafficking of recycling endosomes. Required for endosome fusion either homotypically or with clathrin coated vesicles. Plays a role in the lysosomal trafficking of CTSD/cathepsin D from the Golgi to lysosomes. Also promotes the recycling of transferrin directly from early endosomes to the plasma membrane. Binds phospholipid vesicles containing phosphatidylinositol 3-phosphate (PtdInsP3) . Plays a role in the recycling of transferrin receptor to the plasma membrane .
Cellular Localization	Cell membrane. Lipid-anchor. Cytoplasmic side. Early endosome membrane

St John's Laboratory Ltd

F +44 (0)207 681 2580

T +44 (0)208 223 3081

W <http://www.stjohnslabs.com/>

E info@stjohnslabs.com