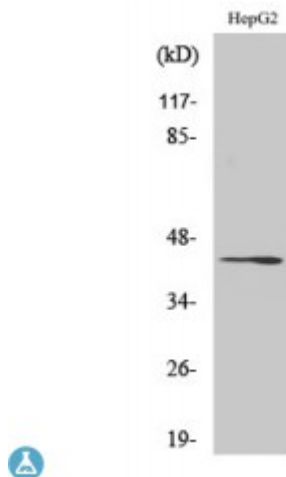


Anti-Rag C antibody



Description	Rabbit polyclonal to Rag C.
Model	STJ95357
Host	Rabbit
Reactivity	Human, Mouse, Rat
Applications	ELISA, WB
Immunogen	Synthesized peptide derived from human Rag C
Immunogen Region	280-360 aa, C-terminal
Gene ID	64121
Gene Symbol	RRAGC
Dilution range	WB 1:500-1:2000ELISA 1:10000
Specificity	Rag C Polyclonal Antibody detects endogenous levels of Rag C protein.
Purification	The antibody was affinity-purified from rabbit antiserum by affinity-chromatography using epitope-specific immunogen.
Note	For Research Use Only (RUO).
Protein Name	Ras-related GTP-binding protein C Rag C RagC GTPase-interacting protein 2 TIB929
Molecular Weight	44 kDa
Clonality	Polyclonal
Conjugation	Unconjugated

Isotype	IgG
Formulation	Liquid in PBS containing 50% glycerol, 0.5% BSA and 0.02% sodium azide.
Concentration	1 mg/ml
Storage Instruction	Store at -20°C, and avoid repeat freeze-thaw cycles.
Database Links	HGNC:19902OMIM:608267
Alternative Names	Ras-related GTP-binding protein C Rag C RagC GTPase-interacting protein 2 TIB929
Function	Guanine nucleotide-binding protein forming heterodimeric Rag complexes required for the amino acid-induced relocalization of mTORC1 to the lysosomes and its subsequent activation by the GTPase RHEB. This is a crucial step in the activation of the TOR signaling cascade by amino acids.
Cellular Localization	Cytoplasm Nucleus Lysosome. Predominantly cytoplasmic. May shuttle between the cytoplasm and nucleus, depending on the bound nucleotide state of associated RRAGA .

St John's Laboratory Ltd

F +44 (0)207 681 2580

T +44 (0)208 223 3081

W <http://www.stjohnslabs.com/>

E info@stjohnslabs.com