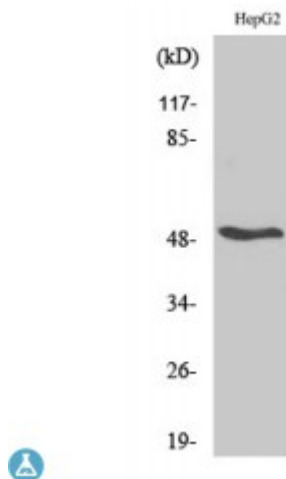


Anti-RA beta antibody



Description	Rabbit polyclonal to RARbeta.
Model	STJ95373
Host	Rabbit
Reactivity	Human, Mouse
Applications	ELISA, IHC, WB
Immunogen	Synthesized peptide derived from human RARbeta
Immunogen Region	300-380 aa, C-terminal
Gene ID	5915
Gene Symbol	RARβ
Dilution range	WB 1:500-1:2000IHC 1:100-1:300ELISA 1:20000
Specificity	RARbeta Polyclonal Antibody detects endogenous levels of RARbeta protein.
Purification	The antibody was affinity-purified from rabbit antiserum by affinity-chromatography using epitope-specific immunogen.
Note	For Research Use Only (RUO).
Protein Name	Retinoic acid receptor beta RAR-beta HBV-activated protein Nuclear receptor subfamily 1 group B member 2 RAR-epsilon
Molecular Weight	50 kDa
Clonality	Polyclonal
Conjugation	Unconjugated

Isotype	IgG
Formulation	Liquid in PBS containing 50% glycerol, 0.5% BSA and 0.02% sodium azide.
Concentration	1 mg/ml
Storage Instruction	Store at -20°C, and avoid repeat freeze-thaw cycles.
Database Links	HGNC:9865OMIM:180220
Alternative Names	Retinoic acid receptor beta RAR-beta HBV-activated protein Nuclear receptor subfamily 1 group B member 2 RAR-epsilon

St John's Laboratory Ltd

F +44 (0)207 681 2580

T +44 (0)208 223 3081

W <http://www.stjohnslabs.com/>

E info@stjohnslabs.com