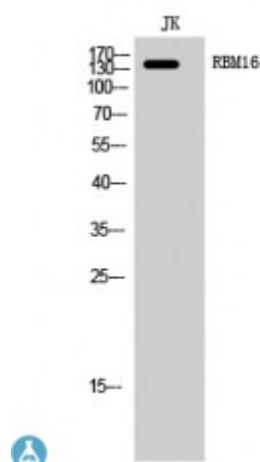


Anti-RBM16 antibody



Description	Rabbit polyclonal to RBM16.
Model	STJ95391
Host	Rabbit
Reactivity	Human, Mouse, Rat
Applications	ELISA, WB
Immunogen	Synthesized peptide derived from human RBM16
Immunogen Region	550-630 aa, Internal
Gene ID	22828
Gene Symbol	SCAF8
Dilution range	WB 1:500-1:2000ELISA 1:10000
Specificity	RBM16 Polyclonal Antibody detects endogenous levels of RBM16 protein.
Purification	The antibody was affinity-purified from rabbit antiserum by affinity-chromatography using epitope-specific immunogen.
Note	For Research Use Only (RUO).
Protein Name	Protein SCAF8 CDC5L complex-associated protein 7 RNA-binding motif protein 16 SR-related and CTD-associated factor 8
Molecular Weight	140 kDa
Clonality	Polyclonal
Conjugation	Unconjugated

Isotype	IgG
Formulation	Liquid in PBS containing 50% glycerol, 0.5% BSA and 0.02% sodium azide.
Concentration	1 mg/ml
Storage Instruction	Store at -20°C, and avoid repeat freeze-thaw cycles.
Database Links	HGNC:20959OMIM:616024
Alternative Names	Protein SCAF8 CDC5L complex-associated protein 7 RNA-binding motif protein 16 SR-related and CTD-associated factor 8
Function	May play a role in mRNA processing.
Cellular Localization	Nucleus. Nucleus matrix. Detected in granular nuclear foci which correspond to sites of active transcription.

St John's Laboratory Ltd

F +44 (0)207 681 2580

T +44 (0)208 223 3081

W <http://www.stjohnslabs.com/>

E info@stjohnslabs.com