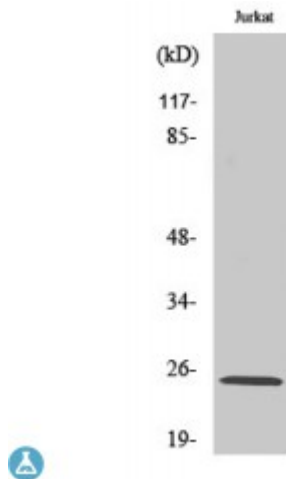


Anti-Rit1 antibody



Description	Rabbit polyclonal to Rit1.
Model	STJ95514
Host	Rabbit
Reactivity	Human, Mouse
Applications	ELISA, WB
Immunogen	Synthesized peptide derived from human Rit1
Immunogen Region	140-220 aa, C-terminal
Gene ID	6016
Gene Symbol	RIT1
Dilution range	WB 1:500-1:2000ELISA 1:10000
Specificity	Rit1 Polyclonal Antibody detects endogenous levels of Rit1 protein.
Tissue Specificity	Expressed in many tissues.
Purification	The antibody was affinity-purified from rabbit antiserum by affinity-chromatography using epitope-specific immunogen.
Note	For Research Use Only (RUO).
Protein Name	GTP-binding protein Rit1 Ras-like protein expressed in many tissues Ras-like without CAAX protein 1
Molecular Weight	25 kDa
Clonality	Polyclonal

Conjugation	Unconjugated
Isotype	IgG
Formulation	Liquid in PBS containing 50% glycerol, 0.5% BSA and 0.02% sodium azide.
Concentration	1 mg/ml
Storage Instruction	Store at -20°C, and avoid repeat freeze-thaw cycles.
Database Links	HGNC:10023OMIM:609591
Alternative Names	GTP-binding protein Rit1 Ras-like protein expressed in many tissues Ras-like without CAAX protein 1
Function	Plays a crucial role in coupling NGF stimulation to the activation of both EPHB2 and MAPK14 signaling pathways and in NGF-dependent neuronal differentiation. Involved in ELK1 transactivation through the Ras-MAPK signaling cascade that mediates a wide variety of cellular functions, including cell proliferation, survival, and differentiation.
Cellular Localization	Cell membrane.

St John's Laboratory Ltd

F +44 (0)207 681 2580

T +44 (0)208 223 3081

W <http://www.stjohnslabs.com/>

E info@stjohnslabs.com