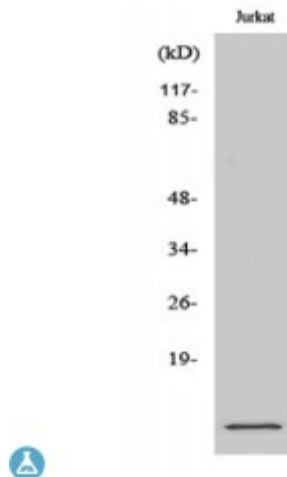


## Anti-S-100A10 antibody



<b>Description</b>	Rabbit polyclonal to S-100A10.
<b>Model</b>	STJ95563
<b>Host</b>	Rabbit
<b>Reactivity</b>	Human, Mouse, Rat
<b>Applications</b>	ELISA, IHC, WB
<b>Immunogen</b>	Synthesized peptide derived from human S-100A10.
<b>Immunogen Region</b>	Internal
<b>Gene ID</b>	<a href="#">6281</a>
<b>Gene Symbol</b>	<a href="#">S100A10</a>
<b>Dilution range</b>	WB 1:500-1:2000IHC 1:100-1:300ELISA 1:40000
<b>Specificity</b>	S-100A10 Polyclonal Antibody detects endogenous levels of S-100A10 protein.
<b>Purification</b>	The antibody was affinity-purified from rabbit antiserum by affinity-chromatography using epitope-specific immunogen.
<b>Note</b>	For Research Use Only (RUO).
<b>Protein Name</b>	Protein S100-A10 Calpactin I light chain Calpactin-1 light chain Cellular ligand of annexin II S100 calcium-binding protein A10 p10 protein p11
<b>Molecular Weight</b>	11 kDa
<b>Clonality</b>	Polyclonal
<b>Conjugation</b>	Unconjugated

<b>Isotype</b>	IgG
<b>Formulation</b>	Liquid in PBS containing 50% glycerol, 0.5% BSA and 0.02% sodium azide.
<b>Concentration</b>	1 mg/ml
<b>Storage Instruction</b>	Store at -20°C, and avoid repeat freeze-thaw cycles.
<b>Database Links</b>	<a href="#">HGNC:10487</a> <a href="#">OMIM:114085</a>
<b>Alternative Names</b>	Protein S100-A10 Calpactin I light chain Calpactin-1 light chain Cellular ligand of annexin II S100 calcium-binding protein A10 p10 protein p11
<b>Function</b>	Because S100A10 induces the dimerization of ANXA2/p36, it may function as a regulator of protein phosphorylation in that the ANXA2 monomer is the preferred target (in vitro) of tyrosine-specific kinase.

---

**St John's Laboratory Ltd**

**F** +44 (0)207 681 2580

**T** +44 (0)208 223 3081

**W** <http://www.stjohnslabs.com/>

**E** [info@stjohnslabs.com](mailto:info@stjohnslabs.com)