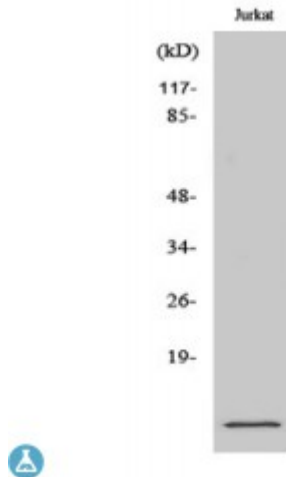


Anti-S-100A10 antibody



Description	Rabbit polyclonal to S-100A10.
Model	STJ95563
Host	Rabbit
Reactivity	Human, Mouse, Rat
Applications	ELISA, IHC, WB
Immunogen	Synthesized peptide derived from human S-100A10.
Immunogen Region	Internal
Gene ID	6281
Gene Symbol	S100A10
Dilution range	WB 1:500-1:2000IHC 1:100-1:300ELISA 1:40000
Specificity	S-100A10 Polyclonal Antibody detects endogenous levels of S-100A10 protein.
Purification	The antibody was affinity-purified from rabbit antiserum by affinity-chromatography using epitope-specific immunogen.
Note	For Research Use Only (RUO).
Protein Name	Protein S100-A10 Calpactin I light chain Calpactin-1 light chain Cellular ligand of annexin II S100 calcium-binding protein A10 p10 protein p11
Molecular Weight	11 kDa
Clonality	Polyclonal
Conjugation	Unconjugated

Isotype	IgG
Formulation	Liquid in PBS containing 50% glycerol, 0.5% BSA and 0.02% sodium azide.
Concentration	1 mg/ml
Storage Instruction	Store at -20°C, and avoid repeat freeze-thaw cycles.
Database Links	HGNC:10487 OMIM:114085
Alternative Names	Protein S100-A10 Calpactin I light chain Calpactin-1 light chain Cellular ligand of annexin II S100 calcium-binding protein A10 p10 protein p11
Function	Because S100A10 induces the dimerization of ANXA2/p36, it may function as a regulator of protein phosphorylation in that the ANXA2 monomer is the preferred target (in vitro) of tyrosine-specific kinase.

St John's Laboratory Ltd

F +44 (0)207 681 2580

T +44 (0)208 223 3081

W <http://www.stjohnslabs.com/>

E info@stjohnslabs.com