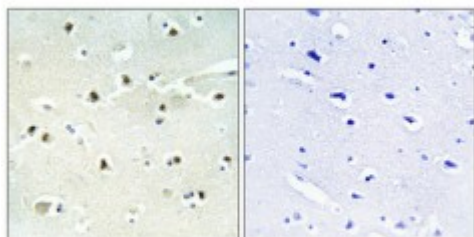


Anti-S-100A16 antibody



Description	Rabbit polyclonal to S-100A16.
Model	STJ95564
Host	Rabbit
Reactivity	Human, Rat
Applications	ELISA, IHC, WB
Immunogen	Synthesized peptide derived from human S-100A16
Immunogen Region	30-110 aa, Internal
Gene ID	140576
Gene Symbol	S100A16
Dilution range	WB 1:500-1:2000IHC 1:100-1:300ELISA 1:40000
Specificity	S-100A16 Polyclonal Antibody detects endogenous levels of S-100A16 protein.
Purification	The antibody was affinity-purified from rabbit antiserum by affinity-chromatography using epitope-specific immunogen.
Note	For Research Use Only (RUO).
Protein Name	Protein S100-A16 Aging-associated gene 13 protein Protein S100-F S100 calcium-binding protein A16
Molecular Weight	20 kDa
Clonality	Polyclonal
Conjugation	Unconjugated

Isotype	IgG
Formulation	Liquid in PBS containing 50% glycerol, 0.5% BSA and 0.02% sodium azide.
Concentration	1 mg/ml
Storage Instruction	Store at -20°C, and avoid repeat freeze-thaw cycles.
Database Links	HGNC:20441 OMIM:617437
Alternative Names	Protein S100-A16 Aging-associated gene 13 protein Protein S100-F S100 calcium-binding protein A16
Function	Calcium-binding protein. Binds one calcium ion per monomer.
Cellular Localization	Nucleus, nucleolus Cytoplasm. Primarily nucleolar. Translocates from the nucleolus to the cytoplasm in response to an increase of intracellular calcium levels.

St John's Laboratory Ltd

F +44 (0)207 681 2580

T +44 (0)208 223 3081

W <http://www.stjohnslabs.com/>

E info@stjohnslabs.com