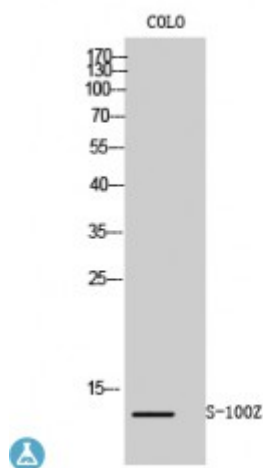


Anti-S-100Z antibody



Description	Rabbit polyclonal to S-100Z.
Model	STJ95569
Host	Rabbit
Reactivity	Human
Applications	ELISA, IHC, WB
Immunogen	Synthesized peptide derived from human S-100Z
Immunogen Region	10-90 aa, N-terminal
Gene ID	170591
Gene Symbol	S100Z
Dilution range	WB 1:500-1:2000IHC 1:100-1:300ELISA 1:20000
Specificity	S-100Z Polyclonal Antibody detects endogenous levels of S-100Z protein.
Tissue Specificity	Highest level of expression in spleen and leukocytes.
Purification	The antibody was affinity-purified from rabbit antiserum by affinity-chromatography using epitope-specific immunogen.
Note	For Research Use Only (RUO).
Protein Name	Protein S100-Z S100 calcium-binding protein Z
Molecular Weight	12 kDa
Clonality	Polyclonal
Conjugation	Unconjugated

Isotype	IgG
Formulation	Liquid in PBS containing 50% glycerol, 0.5% BSA and 0.02% sodium azide.
Concentration	1 mg/ml
Storage Instruction	Store at -20°C, and avoid repeat freeze-thaw cycles.
Database Links	HGNC:30367OMIM:610103
Alternative Names	Protein S100-Z S100 calcium-binding protein Z

St John's Laboratory Ltd

F +44 (0)207 681 2580

T +44 (0)208 223 3081

W <http://www.stjohnslabs.com/>

E info@stjohnslabs.com