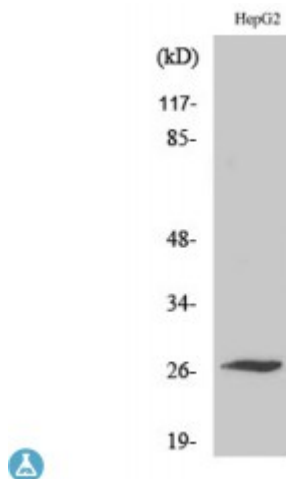


Anti-Scn4b antibody



Description	Rabbit polyclonal to Scn4b.
Model	STJ95589
Host	Rabbit
Reactivity	Human
Applications	ELISA, IHC, WB
Immunogen	Synthesized peptide derived from human Scn4b
Immunogen Region	30-110 aa, Internal
Gene ID	6330
Gene Symbol	SCN4B
Dilution range	WB 1:500-1:2000IHC 1:100-1:300ELISA 1:10000
Specificity	Scn4b Polyclonal Antibody detects endogenous levels of Scn4b protein.
Tissue Specificity	Expressed at a high level in dorsal root ganglia, at a lower level in brain, spinal cord, skeletal muscle and heart. Expressed in the atrium.
Purification	The antibody was affinity-purified from rabbit antiserum by affinity-chromatography using epitope-specific immunogen.
Note	For Research Use Only (RUO).
Protein Name	Sodium channel subunit beta-4
Molecular Weight	27 kDa
Clonality	Polyclonal

Conjugation	Unconjugated
Isotype	IgG
Formulation	Liquid in PBS containing 50% glycerol, 0.5% BSA and 0.02% sodium azide.
Concentration	1 mg/ml
Storage Instruction	Store at -20°C, and avoid repeat freeze-thaw cycles.
Database Links	HGNC:10592OMIM:608256
Alternative Names	Sodium channel subunit beta-4
Function	Modulates channel gating kinetics. Causes negative shifts in the voltage dependence of activation of certain alpha sodium channels, but does not affect the voltage dependence of inactivation. Modulates the susceptibility of the sodium channel to inhibition by toxic peptides from spider, scorpion, wasp and sea anemone venom.
Cellular Localization	Cell membrane
Post-translational Modifications	Contains an interchain disulfide bond with SCN2A.; N-glycosylated.

St John's Laboratory Ltd

F +44 (0)207 681 2580
T +44 (0)208 223 3081

W <http://www.stjohnslabs.com/>
E info@stjohnslabs.com