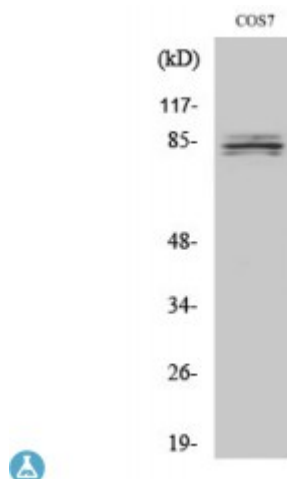


Anti-SEMA4A antibody



Description	Rabbit polyclonal to SEMA4A.
Model	STJ95600
Host	Rabbit
Reactivity	Human, Mouse, Rat, Simian
Applications	ELISA, IF, IHC, WB
Immunogen	Synthesized peptide derived from human SEMA4A
Immunogen Region	470-550 aa, Internal
Gene ID	64218
Gene Symbol	SEMA4A
Dilution range	WB 1:500-1:2000IHC 1:100-1:300IF 1:200-1:1000ELISA 1:20000
Specificity	SEMA4A Polyclonal Antibody detects endogenous levels of SEMA4A protein.
Purification	The antibody was affinity-purified from rabbit antiserum by affinity-chromatography using epitope-specific immunogen.
Note	For Research Use Only (RUO).
Protein Name	Semaphorin-4A Semaphorin-B Sema B
Molecular Weight	84 kDa
Clonality	Polyclonal
Conjugation	Unconjugated

Isotype	IgG
Formulation	Liquid in PBS containing 50% glycerol, 0.5% BSA and 0.02% sodium azide.
Concentration	1 mg/ml
Storage Instruction	Store at -20°C, and avoid repeat freeze-thaw cycles.
Database Links	HGNC:10729OMIM:607292
Alternative Names	Semaphorin-4A Semaphorin-B Sema B
Function	Cell surface receptor for PLXNB1, PLXNB2, PLXNB3 and PLXND1 that plays an important role in cell-cell signaling. Plays a role in priming antigen-specific T-cells, promotes differentiation of Th1 T-helper cells, and thereby contributes to adaptive immunity. Promotes phosphorylation of TIMD2. Inhibits angiogenesis. Promotes axon growth cone collapse. Inhibits axonal extension by providing local signals to specify territories inaccessible for growing axons .
Cellular Localization	Cell membrane

St John's Laboratory Ltd

F +44 (0)207 681 2580

T +44 (0)208 223 3081

W <http://www.stjohnslabs.com/>

E info@stjohnslabs.com