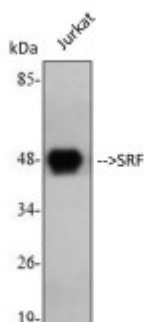


Anti-SRF antibody



Description	Rabbit polyclonal to SRF.
Model	STJ95779
Host	Rabbit
Reactivity	Human, Mouse, Rat
Applications	ELISA, IHC, WB
Immunogen	Synthesized peptide derived from human SRF around the non-phosphorylation site of S103.
Immunogen Region	40-120 aa
Gene ID	6722
Gene Symbol	SRF
Dilution range	WB 1:500-1:2000IHC 1:100-1:300ELISA 1:5000
Specificity	SRF Polyclonal Antibody detects endogenous levels of SRF protein.
Purification	The antibody was affinity-purified from rabbit antiserum by affinity-chromatography using epitope-specific immunogen.
Note	For Research Use Only (RUO).
Protein Name	Serum response factor SRF
Molecular Weight	51 kDa
Clonality	Polyclonal
Conjugation	Unconjugated

Isotype	IgG
Formulation	Liquid in PBS containing 50% glycerol, 0.5% BSA and 0.02% sodium azide.
Concentration	1 mg/ml
Storage Instruction	Store at -20°C, and avoid repeat freeze-thaw cycles.
Database Links	HGNC:11291 OMIM:600589
Alternative Names	Serum response factor SRF
Function	SRF is a transcription factor that binds to the serum response element (SRE), a short sequence of dyad symmetry located 300 bp to the 5' of the site of transcription initiation of some genes (such as FOS). Required for cardiac differentiation and maturation.
Cellular Localization	Nucleus
Post-translational Modifications	Phosphorylated by PRKDC.

St John's Laboratory Ltd

F +44 (0)207 681 2580

T +44 (0)208 223 3081

W <http://www.stjohnslabs.com/>

E info@stjohnslabs.com