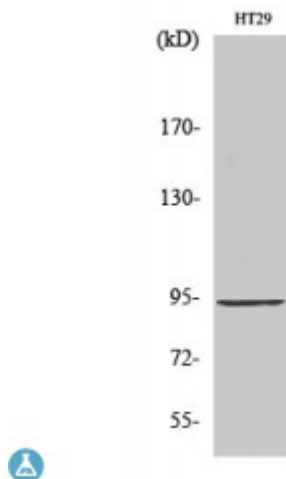


Anti-StIp1 antibody



Description	Rabbit polyclonal to StIp1.
Model	STJ95824
Host	Rabbit
Reactivity	Human
Applications	ELISA, WB
Immunogen	Synthesized peptide derived from human StIp1
Immunogen Region	740-820 aa, C-terminal
Gene ID	55250
Gene Symbol	ELP2
Dilution range	WB 1:500-1:2000ELISA 1:10000
Specificity	StIp1 Polyclonal Antibody detects endogenous levels of StIp1 protein.
Purification	The antibody was affinity-purified from rabbit antiserum by affinity-chromatography using epitope-specific immunogen.
Note	For Research Use Only (RUO).
Protein Name	Elongator complex protein 2 ELP2 SHINC-2 STAT3-interacting protein 1 StIp1
Molecular Weight	93 kDa
Clonality	Polyclonal
Conjugation	Unconjugated

Isotype	IgG
Formulation	Liquid in PBS containing 50% glycerol, 0.5% BSA and 0.02% sodium azide.
Concentration	1 mg/ml
Storage Instruction	Store at -20°C, and avoid repeat freeze-thaw cycles.
Database Links	HGNC:18248OMIM:616054
Alternative Names	Elongator complex protein 2 ELP2 SHINC-2 STAT3-interacting protein 1 StIP1
Function	Regulates the ligand-dependent activation of STAT3. Acts as subunit of the RNA polymerase II elongator complex, which is a histone acetyltransferase component of the RNA polymerase II (Pol II) holoenzyme and is involved in transcriptional elongation. Elongator may play a role in chromatin remodeling and is involved in acetylation of histones H3 and probably H4.
Cellular Localization	Cytoplasm. Nucleus.

St John's Laboratory Ltd

F +44 (0)207 681 2580

T +44 (0)208 223 3081

W <http://www.stjohnslabs.com/>

E info@stjohnslabs.com