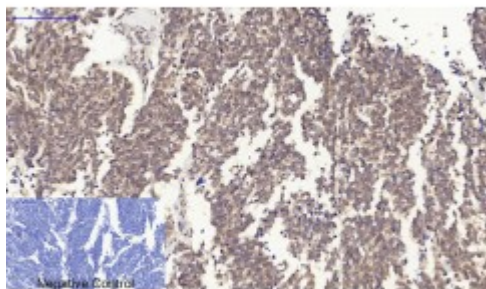


Anti-Survivin antibody



Description

Survivin is a protein encoded by the BIRC5 gene which is approximately 16,3 kDa. Survivin is localised to the cytoplasm and nucleus. It is involved in apoptosis modulation and signalling, IL-23 signalling pathway and mitotic cell cycle. This protein falls under the inhibitor of apoptosis gene family. It is a multitasking protein that has dual roles in promoting cell proliferation and preventing apoptosis. Survivin is expressed in the fetal kidney and liver, and to lesser extent, in the lung and brain. Mutations in the BIRC5 gene may result in ovarian epithelial cancer and cervical carcinosarcoma. STJ95838 was affinity-purified from mouse ascites by affinity-chromatography using epitope-specific immunogen. This antibody detects endogenous survivin protein.

Model	STJ95838
Host	Rabbit
Reactivity	Human, Mouse, Rat
Applications	ELISA, IF, IHC, WB
Immunogen	Synthesized peptide derived from human Survivin around the non-phosphorylation site of T117.
Immunogen Region	60-140 aa
Gene ID	332
Gene Symbol	BIRC5
Dilution range	WB 1:500-1:2000IHC 1:100-1:300IF 1:200-1:1000ELISA 1:5000
Specificity	Survivin Polyclonal Antibody detects endogenous levels of Survivin protein.
Purification	The antibody was affinity-purified from rabbit antiserum by affinity-

chromatography using epitope-specific immunogen.

Note	For Research Use Only (RUO).
Protein Name	Baculoviral IAP repeat-containing protein 5 Apoptosis inhibitor 4 Apoptosis inhibitor survivin
Molecular Weight	20 kDa
Clonality	Polyclonal
Conjugation	Unconjugated
Isotype	IgG
Formulation	Liquid in PBS containing 50% glycerol, 0.5% BSA and 0.02% sodium azide.
Concentration	1 mg/ml
Storage Instruction	Store at -20°C, and avoid repeat freeze-thaw cycles.
Database Links	HGNC:593OMIM:603352
Alternative Names	Baculoviral IAP repeat-containing protein 5 Apoptosis inhibitor 4 Apoptosis inhibitor survivin

St John's Laboratory Ltd

F +44 (0)207 681 2580

T +44 (0)208 223 3081

W <http://www.stjohnslabs.com/>

E info@stjohnslabs.com