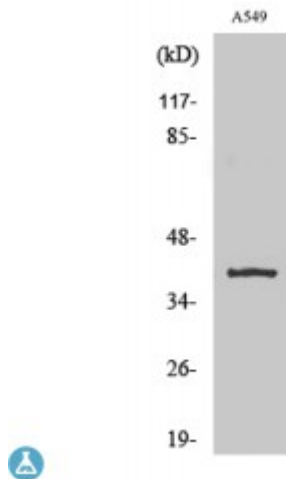


Anti-TASK-5 antibody



Description	Rabbit polyclonal to TASK-5.
Model	STJ95907
Host	Rabbit
Reactivity	Human
Applications	ELISA, IHC, WB
Immunogen	Synthesized peptide derived from human TASK-5
Immunogen Region	250-330 aa, C-terminal
Gene ID	60598
Gene Symbol	KCNK15
Dilution range	WB 1:500-1:2000IHC 1:100-1:300ELISA 1:20000
Specificity	TASK-5 Polyclonal Antibody detects endogenous levels of TASK-5 protein.
Purification	The antibody was affinity-purified from rabbit antiserum by affinity-chromatography using epitope-specific immunogen.
Note	For Research Use Only (RUO).
Protein Name	Potassium channel subfamily K member 15 Acid-sensitive potassium channel protein TASK-5 TWIK-related acid-sensitive K + channel 5 Two pore potassium channel KT3.3 Two pore K + channel KT3.3
Molecular Weight	42 kDa
Clonality	Polyclonal
Conjugation	Unconjugated

Isotype	IgG
Formulation	Liquid in PBS containing 50% glycerol, 0.5% BSA and 0.02% sodium azide.
Concentration	1 mg/ml
Storage Instruction	Store at -20°C, and avoid repeat freeze-thaw cycles.
Database Links	HGNC:13814 OMIM:607368
Alternative Names	Potassium channel subfamily K member 15 Acid-sensitive potassium channel protein TASK-5 TWIK-related acid-sensitive K + channel 5 Two pore potassium channel KT3.3 Two pore K + channel KT3.3

St John's Laboratory Ltd

F +44 (0)207 681 2580

T +44 (0)208 223 3081

W <http://www.stjohnslabs.com/>

E info@stjohnslabs.com